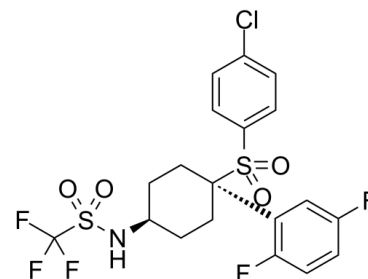


## Data Sheet

<b>Product Name:</b>	MRK-560
<b>Cat. No.:</b>	CS-0003248
<b>CAS No.:</b>	677772-84-8
<b>Molecular Formula:</b>	C <sub>19</sub> H <sub>17</sub> ClF <sub>5</sub> NO <sub>4</sub> S <sub>2</sub>
<b>Molecular Weight:</b>	517.92
<b>Target:</b>	γ-secretase
<b>Pathway:</b>	Neuronal Signaling; Stem Cell/Wnt
<b>Solubility:</b>	DMSO : 100 mg/mL (193.08 mM; Need ultrasonic)



### BIOLOGICAL ACTIVITY:

MRK-560 is a potent, orally bioavailable and brain-penetrant **γ-secretase** inhibitor<sup>[1]</sup>. IC<sub>50</sub> & Target: γ-secretase<sup>[1]</sup>

### References:

[1]. Best JD, et al. The novel gamma secretase inhibitor N-[cis-4-[(4-chlorophenyl)sulfonyl]-4-(2,5-difluorophenyl)cyclohexyl]-1,1,1-trifluoromethanesulfonamide (MRK-560) reduces amyloid plaque deposition without evidence of notch-related pathology in the Tg2576 mouse. J Pharmacol Exp Ther. 2007 Feb;320(2):552-8.

### CAIndexNames:

Methanesulfonamide, N-[cis-4-[(4-chlorophenyl)sulfonyl]-4-(2,5-difluorophenyl)cyclohexyl]-1,1,1-trifluoro-

### SMILES:

O=S([C@]1(C2=C(C=CC(F)=C2)F)CC[C@H](NS(C(F)(F)F)(=O)=O)CC1)(C3=CC=C(Cl)C=C3)=O

**Caution: Product has not been fully validated for medical applications. For research use only.**

Tel: 610-426-3128

Fax: 888-484-5008

E-mail: sales@ChemScene.com

Address: 1 Deer Park Dr, Suite Q, Monmouth Junction, NJ 08852, USA