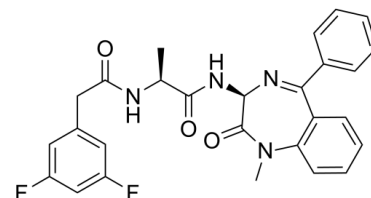


## Data Sheet

<b>Product Name:</b>	Compound E
<b>Cat. No.:</b>	CS-0003250
<b>CAS No.:</b>	209986-17-4
<b>Molecular Formula:</b>	C <sub>27</sub> H <sub>24</sub> F <sub>2</sub> N <sub>4</sub> O <sub>3</sub>
<b>Molecular Weight:</b>	490.50
<b>Target:</b>	γ-secretase
<b>Pathway:</b>	Neuronal Signaling; Stem Cell/Wnt
<b>Solubility:</b>	DMSO : 100 mg/mL (ultrasonic)



### BIOLOGICAL ACTIVITY:

Compound E is a **γ-secretase** inhibitor. Compound E blocks β-amyloid(40), β-amyloid(42), and Notch γ-secretase cleavage with **IC<sub>50</sub>s** of 0.24, 0.37, 0.32 nM, respectively. IC<sub>50</sub> & Target: IC<sub>50</sub>: 0.24 nM (β-amyloid(40)), 0.37 nM (β-amyloid(42)), 0.24 nM (Notch)<sup>[1]</sup> *In Vitro*: Compound E reduces the proliferation of T47D, and MCF-7 cell lines by less than 50% at a concentration of 50 μM<sup>[1]</sup>.

### PROTOCOL (Extracted from published papers and Only for reference)

**Cell Assay:** Compound E is prepared and diluted in DMSO<sup>[1],[1]</sup>The breast cancer cell lines MDA-MB-231, T47D, and MCF-7 are treated with Compound E at concentrations in the range 0.01-50 μM for 48 h and their viability is determined using a Coulter counter [1].

### References:

[1]. Behr D, et al. Pharmacological knock-down of the presenilin 1 heterodimer by a novel gamma -secretase inhibitor: implications for presenilin biology. J Biol Chem. 2001 Nov 30;276(48):45394-402.

[2]. Rasul S, et al. Inhibition of gamma-secretase induces G2/M arrest and triggers apoptosis in breast cancer cells. Br J Cancer. 2009 Jun 16;100(12):1879-88.

### CAIndexNames:

Benzeneacetamide, N-[(1S)-2-[[[(3S)-2,3-dihydro-1-methyl-2-oxo-5-phenyl-1H-1,4-benzodiazepin-3-yl]amino]-1-methyl-2-oxoethyl]-3,5-difluoro-

### SMILES:

FC1=CC(CC(N[C@@H](C)C(N[C@@H]2C(N(C)C(C=CC=C3)=C3C(C4=CC=CC=C4)=N2)=O)=O)=CC(F)=C1

**Caution: Product has not been fully validated for medical applications. For research use only.**

Tel: 610-426-3128

Fax: 888-484-5008

E-mail: sales@ChemScene.com

Address: 1 Deer Park Dr, Suite Q, Monmouth Junction, NJ 08852, USA