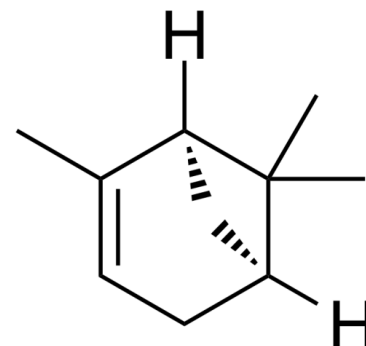


Data Sheet

Product Name:	(-)- α -Pinene
Cat. No.:	CS-0009077
CAS No.:	7785-26-4
Molecular Formula:	C ₁₀ H ₁₆
Molecular Weight:	136.23
Target:	Bacterial; Endogenous Metabolite; GABA Receptor; Virus Protease
Pathway:	Anti-infection; Membrane Transporter/Ion Channel; Metabolic Enzyme/Protease; Neuronal Signaling
Solubility:	DMSO : 60 mg/mL (440.43 mM; Need ultrasonic)



BIOLOGICAL ACTIVITY:

(-)- α -Pinene is a monoterpene and shows sleep enhancing property through a direct binding to GABAA-benzodiazepine (BZD) receptors by acting as a partial modulator at the BZD binding site^[1]. **In Vitro:** (-)- α -pinene enhances the quantity of non-rapid eye movement sleep (NREMS) without affecting the intensity of NREMS by prolonging GABAergic synaptic transmission, acting as a partial modulator of GABAA-BZD receptors and directly binding to the BZD binding site of GABAA receptor^[1].

References:

[1]. Yang H, et al. α -Pinene, a Major Constituent of Pine Tree Oils, Enhances Non-Rapid Eye Movement Sleep in Mice through GABAA-benzodiazepine Receptors.

CAIndexNames:

Bicyclo[3.1.1]hept-2-ene, 2,6,6-trimethyl-, (1S,5S)-

SMILES:

CC1(C)[C@@]2([H])CC=C(C)[C@]1([H])C2

Caution: Product has not been fully validated for medical applications. For research use only.

Tel: 610-426-3128

Fax: 888-484-5008

E-mail: sales@ChemScene.com

Address: 1 Deer Park Dr, Suite Q, Monmouth Junction, NJ 08852, USA