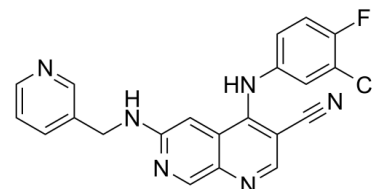


## Data Sheet

<b>Product Name:</b>	Tpl2 Kinase Inhibitor 1
<b>Cat. No.:</b>	CS-0011091
<b>CAS No.:</b>	871307-18-5
<b>Molecular Formula:</b>	C <sub>21</sub> H <sub>14</sub> ClFN <sub>6</sub>
<b>Molecular Weight:</b>	404.83
<b>Target:</b>	MAP3K
<b>Pathway:</b>	MAPK/ERK Pathway
<b>Solubility:</b>	10 mM in DMSO



### BIOLOGICAL ACTIVITY:

Tpl2 Kinase Inhibitor 1 (Compound 1) is a potent and selective **Tpl2 (COT kinase, MAP3K8)** inhibitor, plays an important role in the regulation of the inflammatory response and the progression of some cancers<sup>[1]</sup>. IC50 & Target: Tpl2/COT kinase/MAP3K8<sup>[1]</sup> **In Vitro:** Cancer Osaka thyroid (COT) kinase (Tpl2) is an important regulator of pro-inflammatory cytokines in macrophages<sup>[1]</sup>.

### References:

[1]. Glatthar R, et al. Discovery of Imidazoquinolines as a Novel Class of Potent, Selective, and in Vivo Efficacious Cancer Osaka Thyroid (COT) Kinase Inhibitors. J Med Chem. 2016 Aug 25;59(16):7544-60.

### CAIndexNames:

1,7-Naphthyridine-3-carbonitrile, 4-[(3-chloro-4-fluorophenyl)amino]-6-[(3-pyridinylmethyl)amino]-

### SMILES:

N#CC1=C(NC2=CC=C(F)C(C)=C2)C3=CC(NCC4=CC=CN=C4)=NC=C3N=C1

**Caution: Product has not been fully validated for medical applications. For research use only.**

Tel: 610-426-3128

Fax: 888-484-5008

E-mail: sales@ChemScene.com

Address: 1 Deer Park Dr, Suite Q, Monmouth Junction, NJ 08852, USA