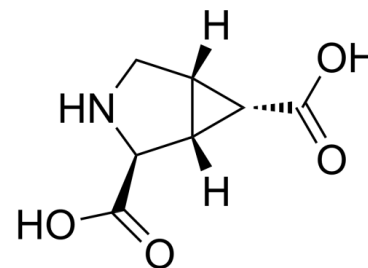


## Data Sheet

<b>Product Name:</b>	MPDC
<b>Cat. No.:</b>	CS-0021173
<b>CAS No.:</b>	159262-32-5
<b>Molecular Formula:</b>	C <sub>7</sub> H <sub>9</sub> NO <sub>4</sub>
<b>Molecular Weight:</b>	171.15
<b>Target:</b>	GlyT
<b>Pathway:</b>	Membrane Transporter/Ion Channel; Neuronal Signaling
<b>Solubility:</b>	10 mM in DMSO



### BIOLOGICAL ACTIVITY:

MPDC is a potent and competitive inhibitor of the Na<sup>+</sup>-dependent high-affinity **glutamate transporter** in forebrain synaptosomes<sup>[1]</sup>.  
IC<sub>50</sub> & Target: Glutamate transporter<sup>[1]</sup>.

### References:

[1]. Bridges RJ, et al. A conformationally constrained competitive inhibitor of the sodium-dependent glutamate transporter in forebrain synaptosomes: L-anti-endo-3,4-methanopyrrolidine dicarboxylate. *Neurosci Lett.* 1994 Jun 20;174(2):193-7.

### CAIndexNames:

3-Azabicyclo[3.1.0]hexane-2,6-dicarboxylic acid, (1R,2S,5S,6S)-

### SMILES:

O=C([C@@H]1[C@@]2([H])[C@@H](C(O)=O)[C@@]2([H])CN1)O

**Caution: Product has not been fully validated for medical applications. For research use only.**

Tel: 610-426-3128

Fax: 888-484-5008

E-mail: sales@ChemScene.com

Address: 1 Deer Park Dr, Suite Q, Monmouth Junction, NJ 08852, USA