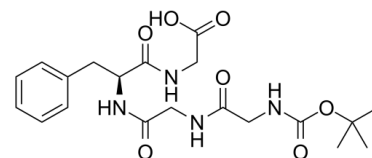


Data Sheet

Product Name:	Boc-Gly-Gly-Phe-Gly-OH
Cat. No.:	CS-0039416
CAS No.:	187794-49-6
Molecular Formula:	C ₂₀ H ₂₈ N ₄ O ₇
Molecular Weight:	436.46
Target:	ADC Linkers
Pathway:	Antibody-drug Conjugate/ADC Related
Solubility:	DMSO : ≥ 100 mg/mL (229.12 mM); H ₂ O : 25 mg/mL (57.28 mM; Need ultrasonic)



BIOLOGICAL ACTIVITY:

Boc-Gly-Gly-Phe-Gly-OH, a self-assembly of N- and C-protected tetrapeptide, is a protease cleavable linker used for the antibody-drug conjugate (**ADC**).

CAIndexNames:

Glycine, N-[(1,1-dimethylethoxy)carbonyl]glycylglycyl-L-phenylalanyl-

SMILES:

CC(C)(C)OC(NCC(NCC(N[C@H](C(NCC(O)=O)=O)CC1=CC=CC=C1)=O)=O)=O

Caution: Product has not been fully validated for medical applications. For research use only.

Tel: 610-426-3128

Fax: 888-484-5008

E-mail: sales@ChemScene.com

Address: 1 Deer Park Dr, Suite Q, Monmouth Junction, NJ 08852, USA