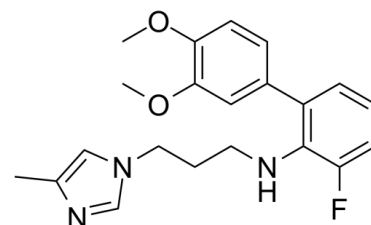


Data Sheet

Product Name:	Glutaminyl Cyclase Inhibitor 1
Cat. No.:	CS-0044635
CAS No.:	2110449-60-8
Molecular Formula:	C ₂₁ H ₂₄ FN ₃ O ₂
Molecular Weight:	369.43
Target:	Amyloid-β
Pathway:	Neuronal Signaling
Solubility:	DMSO : 83.33 mg/mL (225.56 mM; Need ultrasonic); Ethanol : 100 mg/mL (270.69 mM; Need ultrasonic)



BIOLOGICAL ACTIVITY:

Glutaminyl Cyclase Inhibitor 1 is a **glutaminyl cyclase** inhibitor with an **IC₅₀** of 0.5 μM. IC₅₀ & Target: IC₅₀: 0.5 μM (Glutaminyl cyclase)^[1] **In Vitro:** Glutaminyl Cyclase Inhibitor 1 is compound 23^[1].

References:

[1]. Li M, et al. Synthesis and Evaluation of Diphenyl Conjugated Imidazole Derivatives as Potential Glutaminyl Cyclase Inhibitors for Treatment of Alzheimer's Disease. J Med Chem. 2017 Aug 10;60(15):6664-6677.

CAIndexNames:

1H-Imidazole-1-propanamine, N-(3-fluoro-3',4'-dimethoxy[1,1'-biphenyl]-2-yl)-4-methyl-

SMILES:

FC1=CC=CC(C2=CC(OC)=C(OC)C=C2)=C1NCCCN3C=C(C)N=C3

Caution: Product has not been fully validated for medical applications. For research use only.

Tel: 610-426-3128

Fax: 888-484-5008

E-mail: sales@ChemScene.com

Address: 1 Deer Park Dr, Suite Q, Monmouth Junction, NJ 08852, USA