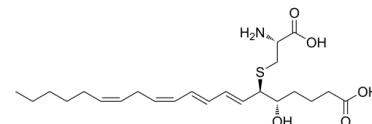


Data Sheet

Product Name:	Leukotriene E4
Cat. No.:	CS-0061845
CAS No.:	75715-89-8
Molecular Formula:	C ₂₃ H ₃₇ NO ₅ S
Molecular Weight:	439.61
Target:	Endogenous Metabolite
Pathway:	Metabolic Enzyme/Protease
Solubility:	10 mM in DMSO



BIOLOGICAL ACTIVITY:

Leukotriene E4 (LTE4) is produced by the action of dipeptidase on LTD4. Leukotriene E4 is one of the constituents of slow-reacting substance of anaphylaxis (SRS-A). Leukotriene E4 accumulates in both plasma and urine and urinary excretion of Leukotriene E4 is most often used as an indicator of asthma.

CAIndexNames:

7,9,11,14-Eicosatetraenoic acid, 6-[[[(2R)-2-amino-2-carboxyethyl]thio]-5-hydroxy-, (5S,6R,7E,9E,11Z,14Z)-

SMILES:

CCCC/C=C\C/C=C\C=C\C=C\C[C@@H](SC[C@H](N)C(O)=O)[C@@H](O)CCCC(O)=O

Caution: Product has not been fully validated for medical applications. For research use only.

Tel: 610-426-3128

Fax: 888-484-5008

E-mail: sales@ChemScene.com

Address: 1 Deer Park Dr, Suite Q, Monmouth Junction, NJ 08852, USA