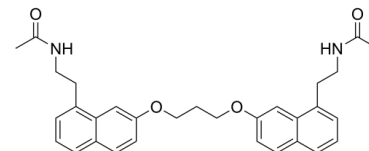


Data Sheet

Product Name:	S26131
Cat. No.:	CS-0081985
CAS No.:	296280-56-3
Molecular Formula:	C ₃₁ H ₃₄ N ₂ O ₄
Molecular Weight:	498.61
Target:	Melatonin Receptor
Pathway:	GPCR/G Protein; Neuronal Signaling
Solubility:	DMSO : 31.25 mg/mL (ultrasonic;warming;heat to 60°C)



BIOLOGICAL ACTIVITY:

S26131 (compound 5) is a potent and selective **MT1** melatonergic ligand, and the **K_i** values are 0.5 and 112 nM for MT1 and MT2, respectively. S26131 behaves as an MT1 and MT2 antagonist^[1]. *In Vitro*: S26131 behaves as an antagonist on MT1 and MT2 receptors with KB values of 5.32 and 143 nM, respectively^[1].

References:

[1]. Descamps-François C, et al. Design and synthesis of naphthalenic dimers as selective MT1 melatonergic ligands. J Med Chem. 2003 Mar 27;46(7):1127-9.

CAIndexNames:

Acetamide, N,N'-[1,3-propanediylbis(oxy-7,1-naphthalenediyl-2,1-ethanediyl)]bis-

SMILES:

CC(NCCC1=C2C=C(C=CC2=CC=C1)OCCCOCC3=CC=C4C=CC=C(C4=C3)CCNC(C)=O)=O

Caution: Product has not been fully validated for medical applications. For research use only.

Tel: 610-426-3128

Fax: 888-484-5008

E-mail: sales@ChemScene.com

Address: 1 Deer Park Dr, Suite F, Monmouth Junction, NJ 08852, USA