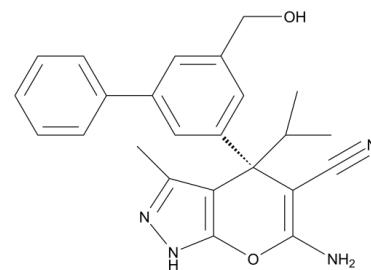


Data Sheet

Product Name:	(-)-SHIN1
Cat. No.:	CS-0103438
CAS No.:	2444764-09-2
Molecular Formula:	C ₂₄ H ₂₄ N ₄ O ₂
Molecular Weight:	400.47
Target:	Others
Pathway:	Others
Solubility:	DMSO : ≥ 100 mg/mL (249.71 mM)



BIOLOGICAL ACTIVITY:

(-)-SHIN1 ((-)-RZ-2994) is an inactive (-) enantiomer of SHIN1^[1].

References:

[1]. Ducker GS, et al. Human SHMT inhibitors reveal defective glycine import as a targetable metabolic vulnerability of diffuse large B-cell lymphoma. Proc Natl Acad Sci U S A. 2017 Oct 24;114(43):11404-11409.

CAIndexNames:

(S)-6-Amino-4-(5-(hydroxymethyl)-[1,1'-biphenyl]-3-yl)-4-isopropyl-3-methyl-1,4-dihydropyrano[2,3-c]pyrazole-5-carbonitrile

SMILES:

OCC1=CC(C2=CC=CC=C2)=CC([C@]3(C(C(C)=NN4)=C4OC(N)=C3C#N)C(C)C)=C1

Caution: Product has not been fully validated for medical applications. For research use only.

Tel: 610-426-3128

Fax: 888-484-5008

E-mail: sales@ChemScene.com

Address: 1 Deer Park Dr, Suite Q, Monmouth Junction, NJ 08852, USA