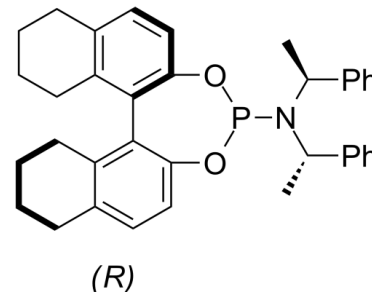


## Data Sheet

|                           |  |
|---------------------------|--|
| <b>Product Name:</b>      | (11bR)-N,N-Bis((S)-1-phenylethyl)-8,9,10,11,12,13,14,15-octahydroindaphtho[2,1-d:1',2'-f][1,3,2]di-oxaphosphepin-4-amine |
| <b>Cat. No.:</b>          | CS-0108672   |
| <b>CAS No.:</b>           | 1021439-60-0   |
| <b>Molecular Formula:</b> | C <sub>36</sub> H <sub>38</sub> NO <sub>2</sub> P  |
| <b>Molecular Weight:</b>  | 547.67   |



### SMILES:

C[C@H](C1=CC=CC=C1)N([C@@H](C)C2=CC=CC=C2)P3OC(C=C4)=C(C5=C(CCCC6)C6=CC=C5O3)C7=C4CCCC7

**Caution: Product has not been fully validated for medical applications. For research use only.**

Tel: 610-426-3128

Fax: 888-484-5008

E-mail: sales@ChemScene.com

Address: 1 Deer Park Dr, Suite Q, Monmouth Junction, NJ 08852, USA