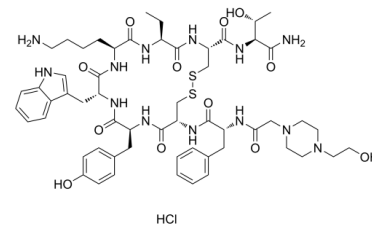


Data Sheet

Product Name:	BIM-23190 (hydrochloride)
Cat. No.:	CS-0146507
Molecular Formula:	C ₅₇ H ₈₀ ClN ₁₃ O ₁₂ S ₂
Molecular Weight:	1238.91
Target:	Somatostatin Receptor
Pathway:	GPCR/G Protein; Neuronal Signaling
Solubility:	DMSO : 100 mg/mL (80.72 mM; Need ultrasonic); H ₂ O : 100 mg/mL (80.72 mM; Need ultrasonic)



BIOLOGICAL ACTIVITY:

BIM-23190 hydrochloride, a **somatostatin** analog, a selective **SSRT2** and **SSRT5** agonist, exhibits **K_i** values of 0.34 nM and 11.1 nM for SSTR2 and SSTR5, respectively. BIM-23190 can be used in the study for cancer and acromegaly^{[1][3]}. *In Vitro*: BIM-23190 tends to mildly stimulate PRL secretion^[1]. *In Vivo*: BIM-23190 (50 µg/mouse, twice a day) exhibits significant anti-tumor (C6 glioma) activity [2].

References:

- [1]. I Shimon, et al. Somatostatin receptor (SSTR) subtype-selective analogues differentially suppress in vitro growth hormone and prolactin in human pituitary adenomas. Novel potential therapy for functional pituitary tumors. J Clin Invest. 1997 Nov 1;100(9):2386-92.
- [2]. Federica Barbieri, et al. Differential efficacy of SSTR1, -2, and -5 agonists in the inhibition of C6 glioma growth in nude mice. Am J Physiol Endocrinol Metab. 2009 Nov;297(5):E1078-88.
- [3]. T J Gillespie, et al. Novel somatostatin analogs for the treatment of acromegaly and cancer exhibit improved in vivo stability and distribution. J Pharmacol Exp Ther. 1998 Apr;285(1):95-104.

CAIndexNames:

L-Threoninamide, N-[2-[4-(2-hydroxyethyl)-1-piperazinyl]acetyl]-D-phenylalanyl-L-cysteinyl-L-tyrosyl-D-tryptophyl-L-lysyl-(2S)-2-aminobutanoyl-L-cysteinyl-, cyclic (2→7)-disulfide (hydrochloride)

SMILES:

O=C([C@@H](CC1=CNC2=CC=CC=C12)NC([C@H](CC3=CC=C(O)C=C3)N4)=O)N[C@@H](CCCC)C(N[C@@H](CC)C(N[C@H](C(N[C@@H]([C@@H](C)O)C(N)=O)=O)C5=CC=CC=C5)NC(CN6CCN(CCO)CC6)=O)C4=O)=O)O.Cl

Caution: Product has not been fully validated for medical applications. For research use only.

Tel: 610-426-3128

Fax: 888-484-5008

E-mail: sales@ChemScene.com

Address: 1 Deer Park Dr, Suite Q, Monmouth Junction, NJ 08852, USA