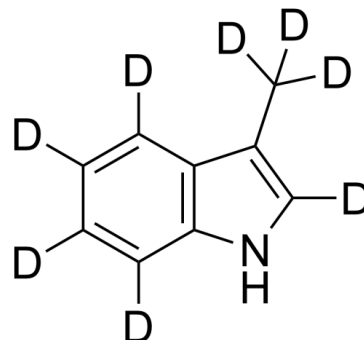


## Data Sheet

|                           |   |
|---------------------------|---|
| <b>Product Name:</b>      | Skatole-d <sub>8</sub>  |
| <b>Cat. No.:</b>          | CS-0310522  |
| <b>CAS No.:</b>           | 697807-03-7   |
| <b>Molecular Formula:</b> | C <sub>9</sub> HD <sub>8</sub> N  |
| <b>Molecular Weight:</b>  | 139.22  |
| <b>Target:</b>            | Aryl Hydrocarbon Receptor; Autophagy; Bacterial; Endogenous Metabolite; Fungal; Isotope-Labeled Compounds; p38 MAPK |
| <b>Pathway:</b>           | Anti-infection; Autophagy; Immunology/Inflammation; MAPK/ERK Pathway; Metabolic Enzyme/Protease; Others             |
| <b>Solubility:</b>        | 10 mM in DMSO   |



### References:

- [1]. Russak EM, et al. Impact of Deuterium Substitution on the Pharmacokinetics of Pharmaceuticals. *Ann Pharmacother.* 2019;53(2):211-216.
- [2]. Kurata K, et al. Skatole regulates intestinal epithelial cellular functions through activating aryl hydrocarbon receptors and p38. *Biochem Biophys Res Commun.* 2019 Mar 19;510(4):649-655.

### CAIndexNames:

1H-Indole-2,4,5,6,7-d5, 3-(methyl-d3)-

### SMILES:

[2H]C(C1=C([2H])NC2=C1C([2H])=C([2H])C([2H])=C2[2H])([2H])[2H]

**Caution: Product has not been fully validated for medical applications. For research use only.**

Tel: 610-426-3128

Fax: 888-484-5008

E-mail: sales@ChemScene.com

Address: 1 Deer Park Dr, Suite Q, Monmouth Junction, NJ 08852, USA