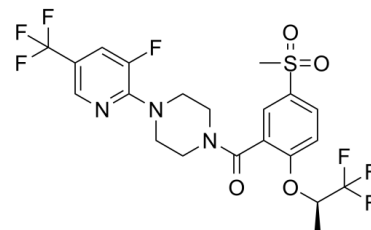


## Data Sheet

<b>Product Name:</b>	Bitopertin (R enantiomer)
<b>Cat. No.:</b>	CS-1261
<b>CAS No.:</b>	845614-12-2
<b>Molecular Formula:</b>	C <sub>21</sub> H <sub>20</sub> F <sub>7</sub> N <sub>3</sub> O <sub>4</sub> S
<b>Molecular Weight:</b>	543.46
<b>Target:</b>	GlyT
<b>Pathway:</b>	Membrane Transporter/Ion Channel; Neuronal Signaling
<b>Solubility:</b>	10 mM in DMSO



### BIOLOGICAL ACTIVITY:

Bitopertin R enantiomer (RG1678 R enantiomer; RO4917838 R enantiomer) is the R-enantiomer of Bitopertin. Bitopertin is a potent, noncompetitive **glycine reuptake** inhibitor, inhibits glycine uptake at human **GlyT1** with a concentration exhibiting **IC<sub>50</sub>** of 25 nM. IC<sub>50</sub> & Target: IC<sub>50</sub>: 25 nM (GlyT1)<sup>[1]</sup> **In Vitro:** Bitopertin (RG1678) competitively blocks [<sup>3</sup>H]ORG24598 binding sites at human GlyT1b in membranes from Chinese hamster ovary cells. Bitopertin potently inhibits [<sup>3</sup>H]glycine uptake in cells stably expressing hGlyT1b and mGlyT1b, with IC<sub>50</sub> values of 25±2 nM and 22±5 nM, respectively (n=6). Conversely, Bitopertin has no effect on hGlyT2-mediated glycine uptake up to 30 μM concentration. Bitopertin has high affinity for the recombinant hGlyT1b transporter. Under equilibrium conditions (1 h at room temperature), Bitopertin displaces [<sup>3</sup>H]ORG24598 binding with a K<sub>i</sub> of 8.1 nM. In hippocampal CA1 pyramidal cells, Bitopertin enhances NMDA-dependent long-term potentiation at 100 nM but not at 300 nM<sup>[1]</sup>. Additional profiling revealed that Bitopertin (RG1678) has an excellent selectivity profile against the GlyT2 isoform (IC<sub>50</sub>>30 μM) and toward a panel of 86 targets including transmembrane and soluble receptors, enzymes, ion channels, and monoamine transporters (<41% inhibition at 10 μM is measured for all targets)<sup>[2]</sup>. **In Vivo:** Bitopertin (RG1678) dose-dependently increases cerebrospinal fluid and striatal levels of glycine measured by microdialysis in rats. Additionally Bitopertin attenuates hyperlocomotion induced by the psychostimulant D-amphetamine or the NMDA receptor glycine site antagonist L-687,414 in mice. Bitopertin also prevents the hyper-response to D-amphetamine challenge in rats treated chronically with phencyclidine, an NMDA receptor open-channel blocker. Administration of vehicle has no effect on extracellular levels of striatal glycine, which remained constant throughout the experiment. In contrast, p.o. administration of Bitopertin (1-30 mg/kg) produced a dose-dependent increase in extracellular glycine levels. Bitopertin 30 mg/kg produces glycine levels 2.5 times higher than pretreatment levels. A similar dose-dependent increase in glycine concentration is observed in the CSF of rats treated p.o. with Bitopertin (1-10 mg/kg) compared with vehicle-treated animals, 3 h after drug administration. Interestingly, the level of CSF glycine increase 3 h after Bitopertin dosing is very similar to the increase in the microdialysis experiment at the same time point<sup>[1]</sup>. In vivo pharmacokinetic studies in rat and monkey reveals that Bitopertin (RG1678) has, in both species, a low plasma clearance, an intermediate volume of distribution, a good oral bioavailability (78% for rat, 56% for monkey), and a favorable terminal half-life (5.8 h for rat, 6.4 h for monkey). The plasma protein binding is high in the two preclinical species (97%) and in human (98%). The CNS penetration of Bitopertin in rat (brain/plasma=0.7) is better than that in mouse (brain/plasma=0.5)<sup>[2]</sup>.

### PROTOCOL (Extracted from published papers and Only for reference)

**Kinase Assay:** <sup>[1]</sup>Association and dissociation kinetic analysis of [<sup>3</sup>H]ORG24598 to hGlyT1 and ratforebrain membranes is performed. [<sup>3</sup>H]ORG24598 binding experiments are performed using membranes from CHO cells expressing hGlyT1b and also in membranes from mouse, rat, monkey, and dogforebrains. Saturation isotherms are determined by adding [<sup>3</sup>H]ORG24598 to rat, mouse, monkey, and dog forebrain membranes (40 μg/well) and cell membranes (10 μg/well) in a total volume of 500 μL for 3 h at room temperature. Saturation binding experiments are analyzed by an Excel-based curve-fitting program using the Michaelis-Menten

equation derived from the equation of a bimolecular reaction and the law of mass action:  $B = (B_{max} * [F]) / (K_d + [F])$ , where B is the amount of ligand bound at equilibrium,  $B_{max}$  the maximum number of binding sites, [F] the concentration of free ligand, and  $K_d$  the ligand dissociation constant. For inhibition experiments, membranes are incubated with 3 nM [<sup>3</sup>H]ORG24598 and 10 concentrations of Bitopertin for 1 h at room temperature. Schild analysis is performed in the presence of increasing concentrations of [<sup>3</sup>H]ORG24598 (1-300 nM). IC<sub>50</sub> values are derived as described above. K<sub>i</sub> values are calculated according to the following equation:  $K_i = IC_{50} / (1 + [L] / K_d)$ <sup>[1]</sup>. **Animal Administration:** Bitopertin (RG1678) is dissolved in H<sub>2</sub>O with 0.3% Tween 80 (Mice)<sup>[1]</sup>; Bitopertin (RG1678) is prepared in Polysorbate 80, HEC, Methyl- + Propylparaben pH 6.0 (Rats)<sup>[1]</sup>,<sup>[1]</sup> Mice<sup>[1]</sup>

Male NMRI mice (20-30 g) are treated with Bitopertin (0.3, 3, 1, and 10 mg/kg p.o.) or vehicle (p.o.). After 1 min, L-687,414 (50 mg/kg s.c.) or vehicle is given. After 15 min of habituation in the activity chambers, horizontal activity is recorded for 60 min. The time course of Bitopertin effects on L-687,414-induced hyperactivity is also examined; locomotor activity is assessed 2.5, 4.5, and 24 h after administration of Bitopertin (L-687,414 is always given 15 min before the activity procedure). In addition, the effect of subchronic Bitopertin is investigated. Mice receive vehicle or Bitopertin (1 mg/kg p.o.) for 4 consecutive days and L-687,414-induced hyperactivity is evaluated on day 5.

#### Rats<sup>[1]</sup>

Wistar rats receive a 14-day treatment of PCP HC1 (5 mg/kg) or vehicle (NaCl 0.9%, 5 mL/kg i.p.). 24 h following the last injection, rats (6-18 per group) are allowed to individually habituate to the test boxes for 30 min. Rats then received Bitopertin (1, 3, 10 mg/kg p.o.) or vehicle (Polysorbate 80, HEC, Methyl- + Propylparaben pH 6.0; 5 mL/kg p.o.), followed after 1 h by 1 mg/kg D-amphetamine or vehicle i.p. Horizontal activity is recorded directly after the administration of Bitopertin until 120 min after dosing with amphetamine. Data are analyzed by ANOVA supplemented by Fischer's least significant difference post hoc test.

## References:

- [1]. Alberati D, et al. Glycine reuptake inhibitor RG1678: A pharmacologic characterization of an investigational agent for the treatment of schizophrenia. *Neuropharmacology*. 2012 Feb;62(2):1152-61.
- [2]. Pinard E, et al. Selective GlyT1 Inhibitors: Discovery of [4-(3-Fluoro-5-trifluoromethylpyridin-2-yl)piperazin-1-yl][5-methanesulfonyl-2-((S)-2,2,2-trifluoro-1-methylethoxy)phenyl]methanone (RG1678), a Promising Novel Medicine To Treat Schizophrenia. *J Me*
- [3]. Alberati, Daniela; Moreau, Jean-Luc; Lengyel, Judith et al. Glycine reuptake inhibitor RG1678: A pharmacologic characterization of an investigational agent for the treatment of schizophrenia. *Neuropharmacology* (2012), 62(2), 1152-1161.
- [4]. Hofmann C, Banken L, Hahn M et al. Evaluation of the Effects of Bitopertin (RG1678) on Cardiac Repolarization: A Thorough Corrected QT Study in Healthy Male Volunteers. *Clin Ther*. 2012 Oct;34(10):2061-71.
- [5]. Martin-Facklam M, Pizzagalli F, Zhou Y et al. Glycine Transporter Type 1 Occupancy by Bitopertin: a Positron Emission Tomography Study in Healthy Volunteers. *Neuropsychopharmacology*. 2012 Nov 7. doi: 10.1038/npp.2012.212. [Epub ahead of print]

## CAIndexNames:

Methanone, [4-[3-fluoro-5-(trifluoromethyl)-2-pyridinyl]-1-piperazinyl][5-(methylsulfonyl)-2-[(1R)-2,2,2-trifluoro-1-methylethoxy]phenyl]-

## SMILES:

FC1=CC(C(F)F)=CN=C1N2CCN(C(C3=CC(S(=O)(C)=O)=CC=C3O[C@@H](C(F)F)C)=O)CC2

**Caution: Product has not been fully validated for medical applications. For research use only.**

Tel: 732-484-9848

Fax: 888-484-5008

E-mail: sales@ChemScene.com

Address: 1 Deer Park Dr, Suite Q, Monmouth Junction, NJ 08852, USA