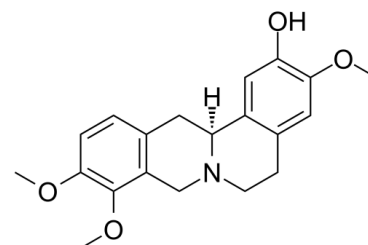


Data Sheet

Product Name:	(-)-Isocorypalmine
Cat. No.:	CS-4255
CAS No.:	483-34-1
Molecular Formula:	C ₂₀ H ₂₃ NO ₄
Molecular Weight:	341.40
Target:	Dopamine Receptor
Pathway:	GPCR/G Protein; Neuronal Signaling
Solubility:	10 mM in DMSO



BIOLOGICAL ACTIVITY:

(-)-Isocorypalmine (Tetrahydrocolumbamine), isolated from the crude base fraction of *Corydalis chaerophylla*, is a **dopamine receptor** ligand^[1]. Recombinant CYP719A21 displays strict substrate specificity and high affinity ($K_m=4.63 \pm 0.71 \mu\text{M}$) for (-)-Isocorypalmine^[2].

References:

[1]. Shen XL, et al. Isolation and identification of tetrahydrocolumbamine as a dopamine receptor ligand from *Polygala tenuifolia* Willd. *Yao Xue Xue Bao*. 1994;29(12):887-890.

[2]. Dang TT, et al. Cloning and characterization of canadine synthase involved in noscapine biosynthesis in opium poppy. *FEBS Lett*. 2014;588(1):198-204.

CAIndexNames:

6H-Dibenzo[a,g]quinolizin-2-ol, 5,8,13,13a-tetrahydro-3,9,10-trimethoxy-, (13aS)-

SMILES:

OC(C=C1[C@@]2([H])N3CC4=C(C=CC(OC)=C4OC)C2)=C(C=C1CC3)OC

Caution: Product has not been fully validated for medical applications. For research use only.

Tel: 610-426-3128

Fax: 888-484-5008

E-mail: sales@ChemScene.com

Address: 1 Deer Park Dr, Suite Q, Monmouth Junction, NJ 08852, USA