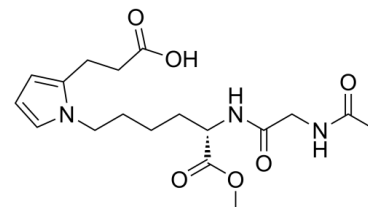


## Data Sheet

<b>Product Name:</b>	CEP dipeptide 1
<b>Cat. No.:</b>	CS-4436
<b>CAS No.:</b>	816432-15-2
<b>Molecular Formula:</b>	C <sub>18</sub> H <sub>27</sub> N <sub>3</sub> O <sub>6</sub>
<b>Molecular Weight:</b>	381.42
<b>Target:</b>	Others
<b>Pathway:</b>	Others
<b>Solubility:</b>	H <sub>2</sub> O : 10 mg/mL (ultrasonic);



### BIOLOGICAL ACTIVITY:

CEP dipeptide 1 is a CEP dipeptide with potent angiogenic activity; mediators of age-related macular degeneration (AMD).

### References:

- [1]. Lu L, et al. Synthesis and structural characterization of carboxyethylpyrrole-modified proteins: mediators of age-related macular degeneration. *Bioorg Med Chem.* 2009 Nov 1;17(21):7548-61.
- [2]. Wang H, et al. 4-Hydroxy-7-oxo-5-heptenoic Acid (HOHA) Lactone is a Biologically Active Precursor for the Generation of 2-(ω-Carboxyethyl)pyrrole (CEP) Derivatives of Proteins and Ethanolamine Phospholipids. *Chem Res Toxicol.* 2015 May 18;28(5):967-77.

### CAIndexNames:

L-Norleucine, N-acetylglycyl-6-[2-(2-carboxyethyl)-1H-pyrrol-1-yl]-, 21-methyl ester

### SMILES:

O=C(O)CCC1=CC=CN1CCCC[C@H](NC(CNC(C)=O)=O)C(OC)=O

**Caution: Product has not been fully validated for medical applications. For research use only.**

Tel: 610-426-3128

Fax: 888-484-5008

E-mail: sales@ChemScene.com

Address: 1 Deer Park Dr, Suite Q, Monmouth Junction, NJ 08852, USA