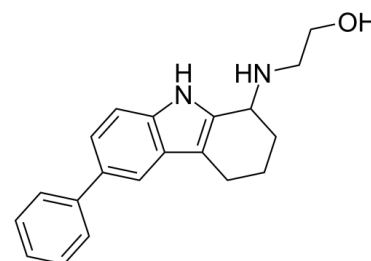


Data Sheet

Product Name:	CASIN
Cat. No.:	CS-5671
CAS No.:	425399-05-9
Molecular Formula:	C ₂₀ H ₂₂ N ₂ O
Molecular Weight:	306.40
Target:	Apoptosis; Ras
Pathway:	Apoptosis; GPCR/G Protein
Solubility:	DMSO : ≥ 31 mg/mL (101.17 mM)



BIOLOGICAL ACTIVITY:

CASIN is a selective **GTPase Cdc42** inhibitor with an **IC₅₀** of 2 μM. CASIN can be used for the research of cancer^{[1][2]}. IC₅₀ & Target: IC₅₀: 2 μM (GTPase Cdc42)^[1] **In Vitro**: CASIN (0-10 μM; 3 d) inhibits the growth of AMO-1, ARH-77, IM-9, JLN-3, L-363, MOLP-8 and RPMI-8226/S cells^[1].

CASIN (0-10 μM; 16 h) inhibits melphalan induced FANCD2 mono-ubiquitination in LR5 cells but shows no effect to S cells^[1].

CASIN (5 μM; 2 d) increases cell apoptosis of bortezomib-resistant MM patient cells^[1]. **In Vivo**: CASIN (20 mg/kg; i.p. 2 times a day) prolongs lifetime of mice with busulfan injection^[1].

References:

[1]. Florian MC et al. Cdc42 activity regulates hematopoietic stem cell aging and rejuvenation. *Cell Stem Cell*, 2012 May 4, 10(5):520-30.

[2]. Nguyen P, et al. Rational Targeting of Cdc42 Overcomes Drug Resistance of Multiple Myeloma. *Front Oncol*. 2019 Oct 1;9:958. doi: 10.3389/fonc.2019.00958.

CAIndexNames:

Ethanol, 2-[(2,3,4,9-tetrahydro-6-phenyl-1H-carbazol-1-yl)amino]-

SMILES:

OCCNC1C(NC2=C3C=C(C4=CC=CC=C4)C=C2)=C3CCC1

Caution: Product has not been fully validated for medical applications. For research use only.

Tel: 610-426-3128

Fax: 888-484-5008

E-mail: sales@ChemScene.com

Address: 1 Deer Park Dr, Suite Q, Monmouth Junction, NJ 08852, USA