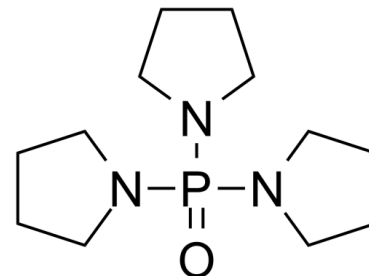


## Data Sheet

<b>Product Name:</b>	Tri(pyrrolidin-1-yl)phosphine oxide
<b>Cat. No.:</b>	CS-W010169
<b>CAS No.:</b>	6415-07-2
<b>Molecular Formula:</b>	C <sub>12</sub> H <sub>24</sub> N <sub>3</sub> OP
<b>Molecular Weight:</b>	257.32



**SMILES:**

O=P(N1CCCC1)(N2CCCC2)N3CCCC3

**Caution: Product has not been fully validated for medical applications. For research use only.**

Tel: 610-426-3128

Fax: 888-484-5008

E-mail: sales@ChemScene.com

Address: 1 Deer Park Dr, Suite Q, Monmouth Junction, NJ 08852, USA