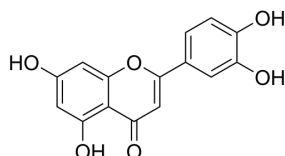


## Certificate of Analysis

|                       |   |
|-----------------------|---|
| <b>Product Name:</b>  | Luteolin  |
| <b>Cat. No.:</b>      | CS-4611   |
| <b>CAS No.:</b>       | 491-70-3  |
| <b>Batch No.:</b>     | 107169  |
| <b>Chemical Name:</b> | 4H-1-Benzopyran-4-one, 2-(3,4-dihydroxyphenyl)-5,7-dihydroxy- |

### PHYSICAL AND CHEMICAL PROPERTIES

|                            |  |
|----------------------------|--|
| <b>Molecular Formula:</b>  | C <sub>15</sub> H <sub>10</sub> O <sub>6</sub> |
| <b>Molecular Weight:</b>   | 286.24   |
| <b>Storage:</b>            | Storage temp. 2-8°C                            |
| <b>Chemical Structure:</b> |  |



### ANALYTICAL DATA

|                       |   |
|-----------------------|---|
| <b>Appearance:</b>    | Light yellow to yellow (Solid)  |
| <b>LCMS:</b>          | Consistent with structure   |
| <b>Purity (LCMS):</b> | 98.01%  |
| <b>Conclusion:</b>    | The product has been tested and complies with the given specifications. |

**Caution: Product has not been fully validated for medical applications. For research use only.**

Tel: 610-426-3128

Fax: 888-484-5008

E-mail: sales@ChemScene.com

Address: 1 Deer Park Dr, Suite F, Monmouth Junction, NJ 08852, USA