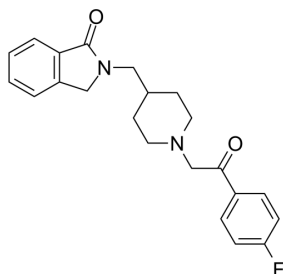


## Certificate of Analysis

<b>Product Name:</b>	Roluperidone
<b>Cat. No.:</b>	CS-6971
<b>CAS No.:</b>	359625-79-9
<b>Batch No.:</b>	212662
<b>Chemical Name:</b>	1H-Isoindol-1-one, 2-[[1-[2-(4-fluorophenyl)-2-oxoethyl]-4-piperidinyl]methyl]-2,3-dihydro-

### PHYSICAL AND CHEMICAL PROPERTIES

<b>Molecular Formula:</b>	C <sub>22</sub> H <sub>23</sub> FN <sub>2</sub> O <sub>2</sub>
<b>Molecular Weight:</b>	366.43
<b>Storage:</b>	Storage temp. 2-8°C
<b>Chemical Structure:</b>	



### ANALYTICAL DATA

<b>Appearance:</b>	White to yellow (Solid)
<b><sup>1</sup>H NMR Spectrum:</b>	Consistent with structure
<b>LCMS:</b>	Consistent with structure
<b>Purity (LCMS):</b>	99.91%
<b>Conclusion:</b>	The product has been tested and complies with the given specifications.

**Caution: Product has not been fully validated for medical applications. For research use only.**

Tel: 610-426-3128

Fax: 888-484-5008

E-mail: sales@ChemScene.com

Address: 1 Deer Park Dr, Suite Q, Monmouth Junction, NJ 08852, USA