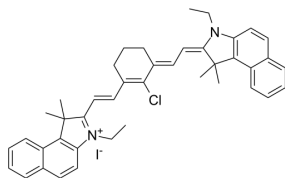


Certificate of Analysis

| | |
|-----------------------|---|
| Product Name: | Heptamethine cyanine dye-1 |
| Cat. No.: | CS-6163 |
| CAS No.: | 162411-29-2 |
| Batch No.: | 23157 |
| Chemical Name: | 1H-Benz[e]indolium, 2-[(1E)-2-[(3E)-2-chloro-3-[(2E)-2-(3-ethyl-1,3-dihydro-1,1-dimethyl-2H-benz[e]indol-2-ylidene)ethylidene]-1-cyclohexen-1-yl]ethenyl]-3-ethyl-1,1-dimethyl-, iodide (1:1) |

PHYSICAL AND CHEMICAL PROPERTIES

| | |
|----------------------------|---|
| Molecular Formula: | C ₄₂ H ₄₄ ClIN ₂ |
| Molecular Weight: | 739.17 |
| Storage: | 2-8°C, protect from light |
| Chemical Structure: | |



ANALYTICAL DATA

| | |
|------------------------------------|---|
| Appearance: | Light brown to black (Solid) |
| ¹H NMR Spectrum: | Consistent with structure |
| Purity (NMR): | ≥96.0% |
| Conclusion: | The product has been tested and complies with the given specifications. |

Caution: Product has not been fully validated for medical applications. For research use only.

Tel: 732-484-9848

Fax: 888-484-5008

E-mail: sales@ChemScene.com

Address: 1 Deer Park Dr, Suite Q, Monmouth Junction, NJ 08852, USA