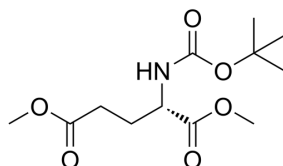


## Certificate of Analysis

<b>Product Name:</b>	Boc-Glu(OMe)-OMe
<b>Cat. No.:</b>	CS-W008715
<b>CAS No.:</b>	59279-60-6
<b>Batch No.:</b>	270202
<b>Chemical Name:</b>	L-Glutamic acid, N-[(1,1-dimethylethoxy)carbonyl]-, 1,5-dimethyl ester

### PHYSICAL AND CHEMICAL PROPERTIES

<b>Molecular Formula:</b>	C <sub>12</sub> H <sub>21</sub> NO <sub>6</sub>
<b>Molecular Weight:</b>	275.30
<b>Storage:</b>	Storage temp. 2-8°C
<b>Chemical Structure:</b>	



### ANALYTICAL DATA

<b>Appearance:</b>	White to off-white (Solid)
<b><sup>1</sup>H NMR Spectrum:</b>	Consistent with structure
<b>Purity (NMR):</b>	≥97.0%
<b>Water(KF):</b>	0.07%
<b>Residue on Ignition:</b>	0.17%
<b>OR[α](C=1.07 g/100ml CHCL<sub>3</sub>):</b>	13.4°
<b>Conclusion:</b>	The product has been tested and complies with the given specifications.

**Caution: Product has not been fully validated for medical applications. For research use only.**

Tel: 610-426-3128

Fax: 888-484-5008

E-mail: sales@ChemScene.com

Address: 1 Deer Park Dr, Suite Q, Monmouth Junction, NJ 08852, USA