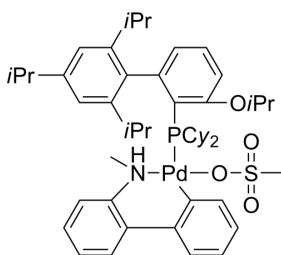


Certificate of Analysis

Product Name:	EPhos Pd G4
Cat. No.:	CS-0181545
CAS No.:	2132978-44-8
Batch No.:	331676
Chemical Name:	Palladium, [dicyclohexyl[3-(1-methylethoxy)-2',4',6'-tris(1-methylethyl)[1,1'-biphenyl]-2-yl]phosphine-κP](methanesulfonato-κO)[2'-(methylamino-κN)[1,1'-biphenyl]-2-yl-κC]-

PHYSICAL AND CHEMICAL PROPERTIES

Molecular Formula:	C ₅₀ H ₇₀ NO ₄ PPdS
Molecular Weight:	918.55
Storage:	2-8°C, protect from light
Chemical Structure:	



ANALYTICAL DATA

Appearance:	Off-white to light brown (Solid)
Purity:	≥98.0%
Conclusion:	The product has been tested and complies with the given specifications.

Caution: Product has not been fully validated for medical applications. For research use only.

Tel: 610-426-3128

Fax: 888-484-5008

E-mail: sales@ChemScene.com

Address: 1 Deer Park Dr, Suite Q, Monmouth Junction, NJ 08852, USA