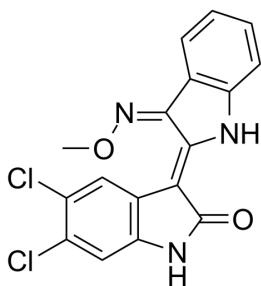


Certificate of Analysis

Product Name: KY19382
Cat. No.: CS-0134890
CAS No.: 2226664-93-1
Batch No.: 90240
Chemical Name: 2H-Indol-2-one, 5,6-dichloro-3-[1,3-dihydro-3-(methoxyimino)-2H-indol-2-ylidene]-1,3-dihydro-

PHYSICAL AND CHEMICAL PROPERTIES

Molecular Formula: C₁₇H₁₁Cl₂N₃O₂
Molecular Weight: 360.19
Storage: Storage temp. 2-8°C
Chemical Structure:



ANALYTICAL DATA

Appearance: Brown to reddish brown (Solid)
¹H NMR Spectrum: Consistent with structure
MS: Consistent with structure
Purity (HPLC): 95.53%
Conclusion: The product has been tested and complies with the given specifications.

Caution: Product has not been fully validated for medical applications. For research use only.

Tel: 732-484-9848

Fax: 888-484-5008

E-mail: sales@ChemScene.com

Address: 1 Deer Park Dr, Suite Q, Monmouth Junction, NJ 08852, USA