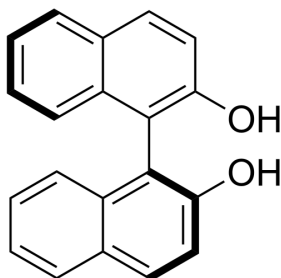


Certificate of Analysis

Product Name: (S)-1,1'-Bi-2,2'-naphthol
Cat. No.: CS-W020139
CAS No.: 18531-99-2
Batch No.: L344229
Chemical Name: [1,1'-Binaphthalene]-2,2'-diol, (1S)-

PHYSICAL AND CHEMICAL PROPERTIES

Molecular Formula: C₂₀H₁₄O₂
Molecular Weight: 286.32
Storage: Storage temp. 2-8°C
Chemical Structure:



ANALYTICAL DATA

Appearance: White to off-white (Solid)
¹H NMR Spectrum: Consistent with structure
MS: Consistent with structure
Enantiomeric Excess: 97.24%
Purity (HPLC): 99.88%
Water(KF): 0.05%
Optical Rotation[α]: -33.1479° (C=0.9573g/100ml THF)
Conclusion: The product has been tested and complies with the given specifications.

Caution: Product has not been fully validated for medical applications. For research use only.

Tel: 610-426-3128

Fax: 888-484-5008

E-mail: sales@ChemScene.com

Address: 1 Deer Park Dr, Suite Q, Monmouth Junction, NJ 08852, USA