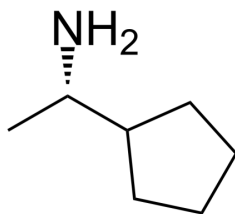


Certificate of Analysis

Product Name: (S)-1-Cyclopentylethan-1-amine hydrochloride
Cat. No.: CS-0135384
CAS No.: 150852-73-6
Batch No.: Le1229116003
Chemical Name: Cyclopentanemethanamine, α-methyl-, hydrochloride (1:1), (αS)-

PHYSICAL AND CHEMICAL PROPERTIES

Molecular Formula: C₇H₁₆ClN
Molecular Weight: 149.66
Storage: 2-8°C, sealed storage, away from moisture
Chemical Structure:



H-Cl

ANALYTICAL DATA

Appearance: White to off-white (Solid)
¹H NMR Spectrum: Consistent with structure
Purity (NMR): ≥97.0%
Conclusion: The product has been tested and complies with the given specifications.

Caution: Product has not been fully validated for medical applications. For research use only.

Tel: 610-426-3128

Fax: 888-484-5008

E-mail: sales@ChemScene.com

Address: 1 Deer Park Dr, Suite Q, Monmouth Junction, NJ 08852, USA