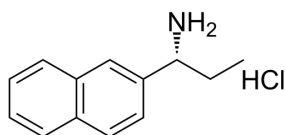


## Certificate of Analysis

**Product Name:** (R)-1-(Naphthalen-2-yl)propan-1-amine hydrochloride  
**Cat. No.:** CS-0196892  
**CAS No.:** 1810074-76-0  
**Batch No.:** Lf0616140489

### PHYSICAL AND CHEMICAL PROPERTIES

**Molecular Formula:** C<sub>13</sub>H<sub>16</sub>ClN  
**Molecular Weight:** 221.73  
**Storage:** 2-8°C, protect from light  
**Chemical Structure:**



### ANALYTICAL DATA

**Appearance:** White to off-white (Solid)  
**<sup>1</sup>H NMR Spectrum:** Consistent with structure  
**LCMS:** Consistent with structure  
**Purity (LCMS):** 99.86%  
**Conclusion:** The product has been tested and complies with the given specifications.

**Caution: Product has not been fully validated for medical applications. For research use only.**

Tel: 610-426-3128

Fax: 888-484-5008

E-mail: sales@ChemScene.com

Address: 1 Deer Park Dr, Suite Q, Monmouth Junction, NJ 08852, USA