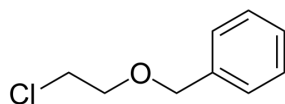


## Certificate of Analysis

**Product Name:** ((2-Chloroethoxy)methyl)benzene  
**Cat. No.:** CS-W017668  
**CAS No.:** 17229-17-3  
**Batch No.:** Lf0830164612

### PHYSICAL AND CHEMICAL PROPERTIES

**Molecular Formula:** C<sub>9</sub>H<sub>11</sub>ClO  
**Molecular Weight:** 170.64  
**Storage:** Storage temp. 2-8°C  
**Chemical Structure:**



### ANALYTICAL DATA

**Appearance:** Colorless to light yellow (Liquid)  
**<sup>1</sup>H NMR Spectrum:** Consistent with structure  
**Purity (GC):** 98.01%  
**Conclusion:** The product has been tested and complies with the given specifications.

**Caution: Product has not been fully validated for medical applications. For research use only.**

Tel: 610-426-3128

Fax: 888-484-5008

E-mail: sales@ChemScene.com

Address: 1 Deer Park Dr, Suite Q, Monmouth Junction, NJ 08852, USA