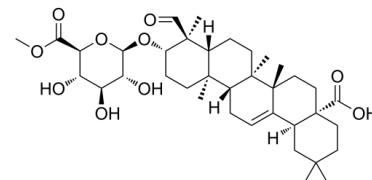


Data Sheet

Product Name:	Methyl gypsogenin-3-O-glucuronide
Cat. No.:	CS-0016873
CAS No.:	96553-02-5
Molecular Formula:	C ₃₇ H ₅₆ O ₁₀
Molecular Weight:	660.83
Target:	Others
Pathway:	Others
Solubility:	DMSO : 100 mg/mL (ultrasonic)



BIOLOGICAL ACTIVITY:

Methyl gypsogenin-3-O-glucuronide (Gypsogenin-3-O-(6-O-methyl)-glucoside) is a ubiquitous saponin precursor in plants of the genus *Gypsophila*^[1]. *In Vitro*: Treatment of suspended *G. paniculata* cells with Methyl gypsogenin-3-O-glucuronide (Gypsogenin-3-O-(6-O-methyl)-glucoside) 24 hours before administration of [¹⁴C]acetate results in a marked reduction in the incorporation of radioactivity into saponins and their precursors but not into sterols and steryl glucosides^[1].

References:

[1]. MaxHenry, et al. Effect of gypsogenin 3,O-glucuronide pretreatment of *Gypsophila paniculata* and *Saponaria officinalis* cell suspension cultures on the activities of microsomal 2,3-oxidosqualene cycloartenol and amyirin cyclases. Volume 31, Issue 11, 1992, Pages 3855-3859.

CAIndexNames:

β-D-Glucopyranosiduronic acid, (3β,4α)-17-carboxy-23-oxo-28-norolean-12-en-3-yl, 6-methyl ester

SMILES:

OC(=O)C1=CC(=C(C=C1)C2=CC(=C(C=C2)C3=CC(=C(C=C3)C4=CC(=C(C=C4)C5=CC(=C(C=C5)C6=CC(=C(C=C6)C7=CC(=C(C=C7)C8=CC(=C(C=C8)C9=CC(=C(C=C9)C10=CC(=C(C=C10)C11=CC(=C(C=C11)C12=CC(=C(C=C12)C13=CC(=C(C=C13)C14=CC(=C(C=C14)C15=CC(=C(C=C15)C16=CC(=C(C=C16)C17=CC(=C(C=C17)C18=CC(=C(C=C18)C19=CC(=C(C=C19)C20=CC(=C(C=C20)C21=CC(=C(C=C21)C22=CC(=C(C=C22)C23=CC(=C(C=C23)C24=CC(=C(C=C24)C25=CC(=C(C=C25)C26=CC(=C(C=C26)C27=CC(=C(C=C27)C28=CC(=C(C=C28)C29=CC(=C(C=C29)C30=CC(=C(C=C30)C31=CC(=C(C=C31)C32=CC(=C(C=C32)C33=CC(=C(C=C33)C34=CC(=C(C=C34)C35=CC(=C(C=C35)C36=CC(=C(C=C36)C37=CC(=C(C=C37)C38=CC(=C(C=C38)C39=CC(=C(C=C39)C40=CC(=C(C=C40)C41=CC(=C(C=C41)C42=CC(=C(C=C42)C43=CC(=C(C=C43)C44=CC(=C(C=C44)C45=CC(=C(C=C45)C46=CC(=C(C=C46)C47=CC(=C(C=C47)C48=CC(=C(C=C48)C49=CC(=C(C=C49)C50=CC(=C(C=C50)C51=CC(=C(C=C51)C52=CC(=C(C=C52)C53=CC(=C(C=C53)C54=CC(=C(C=C54)C55=CC(=C(C=C55)C56=CC(=C(C=C56)C57=CC(=C(C=C57)C58=CC(=C(C=C58)C59=CC(=C(C=C59)C60=CC(=C(C=C60)C61=CC(=C(C=C61)C62=CC(=C(C=C62)C63=CC(=C(C=C63)C64=CC(=C(C=C64)C65=CC(=C(C=C65)C66=CC(=C(C=C66)C67=CC(=C(C=C67)C68=CC(=C(C=C68)C69=CC(=C(C=C69)C70=CC(=C(C=C70)C71=CC(=C(C=C71)C72=CC(=C(C=C72)C73=CC(=C(C=C73)C74=CC(=C(C=C74)C75=CC(=C(C=C75)C76=CC(=C(C=C76)C77=CC(=C(C=C77)C78=CC(=C(C=C78)C79=CC(=C(C=C79)C80=CC(=C(C=C80)C81=CC(=C(C=C81)C82=CC(=C(C=C82)C83=CC(=C(C=C83)C84=CC(=C(C=C84)C85=CC(=C(C=C85)C86=CC(=C(C=C86)C87=CC(=C(C=C87)C88=CC(=C(C=C88)C89=CC(=C(C=C89)C90=CC(=C(C=C90)C91=CC(=C(C=C91)C92=CC(=C(C=C92)C93=CC(=C(C=C93)C94=CC(=C(C=C94)C95=CC(=C(C=C95)C96=CC(=C(C=C96)C97=CC(=C(C=C97)C98=CC(=C(C=C98)C99=CC(=C(C=C99)C100=CC(=C(C=C100)C101=CC(=C(C=C101)C102=CC(=C(C=C102)C103=CC(=C(C=C103)C104=CC(=C(C=C104)C105=CC(=C(C=C105)C106=CC(=C(C=C106)C107=CC(=C(C=C107)C108=CC(=C(C=C108)C109=CC(=C(C=C109)C110=CC(=C(C=C110)C111=CC(=C(C=C111)C112=CC(=C(C=C112)C113=CC(=C(C=C113)C114=CC(=C(C=C114)C115=CC(=C(C=C115)C116=CC(=C(C=C116)C117=CC(=C(C=C117)C118=CC(=C(C=C118)C119=CC(=C(C=C119)C120=CC(=C(C=C120)C121=CC(=C(C=C121)C122=CC(=C(C=C122)C123=CC(=C(C=C123)C124=CC(=C(C=C124)C125=CC(=C(C=C125)C126=CC(=C(C=C126)C127=CC(=C(C=C127)C128=CC(=C(C=C128)C129=CC(=C(C=C129)C130=CC(=C(C=C130)C131=CC(=C(C=C131)C132=CC(=C(C=C132)C133=CC(=C(C=C133)C134=CC(=C(C=C134)C135=CC(=C(C=C135)C136=CC(=C(C=C136)C137=CC(=C(C=C137)C138=CC(=C(C=C138)C139=CC(=C(C=C139)C140=CC(=C(C=C140)C141=CC(=C(C=C141)C142=CC(=C(C=C142)C143=CC(=C(C=C143)C144=CC(=C(C=C144)C145=CC(=C(C=C145)C146=CC(=C(C=C146)C147=CC(=C(C=C147)C148=CC(=C(C=C148)C149=CC(=C(C=C149)C150=CC(=C(C=C150)C151=CC(=C(C=C151)C152=CC(=C(C=C152)C153=CC(=C(C=C153)C154=CC(=C(C=C154)C155=CC(=C(C=C155)C156=CC(=C(C=C156)C157=CC(=C(C=C157)C158=CC(=C(C=C158)C159=CC(=C(C=C159)C160=CC(=C(C=C160)C161=CC(=C(C=C161)C162=CC(=C(C=C162)C163=CC(=C(C=C163)C164=CC(=C(C=C164)C165=CC(=C(C=C165)C166=CC(=C(C=C166)C167=CC(=C(C=C167)C168=CC(=C(C=C168)C169=CC(=C(C=C169)C170=CC(=C(C=C170)C171=CC(=C(C=C171)C172=CC(=C(C=C172)C173=CC(=C(C=C173)C174=CC(=C(C=C174)C175=CC(=C(C=C175)C176=CC(=C(C=C176)C177=CC(=C(C=C177)C178=CC(=C(C=C178)C179=CC(=C(C=C179)C180=CC(=C(C=C180)C181=CC(=C(C=C181)C182=CC(=C(C=C182)C183=CC(=C(C=C183)C184=CC(=C(C=C184)C185=CC(=C(C=C185)C186=CC(=C(C=C186)C187=CC(=C(C=C187)C188=CC(=C(C=C188)C189=CC(=C(C=C189)C190=CC(=C(C=C190)C191=CC(=C(C=C191)C192=CC(=C(C=C192)C193=CC(=C(C=C193)C194=CC(=C(C=C194)C195=CC(=C(C=C195)C196=CC(=C(C=C196)C197=CC(=C(C=C197)C198=CC(=C(C=C198)C199=CC(=C(C=C199)C200=CC(=C(C=C200)C201=CC(=C(C=C201)C202=CC(=C(C=C202)C203=CC(=C(C=C203)C204=CC(=C(C=C204)C205=CC(=C(C=C205)C206=CC(=C(C=C206)C207=CC(=C(C=C207)C208=CC(=C(C=C208)C209=CC(=C(C=C209)C210=CC(=C(C=C210)C211=CC(=C(C=C211)C212=CC(=C(C=C212)C213=CC(=C(C=C213)C214=CC(=C(C=C214)C215=CC(=C(C=C215)C216=CC(=C(C=C216)C217=CC(=C(C=C217)C218=CC(=C(C=C218)C219=CC(=C(C=C219)C220=CC(=C(C=C220)C221=CC(=C(C=C221)C222=CC(=C(C=C222)C223=CC(=C(C=C223)C224=CC(=C(C=C224)C225=CC(=C(C=C225)C226=CC(=C(C=C226)C227=CC(=C(C=C227)C228=CC(=C(C=C228)C229=CC(=C(C=C229)C230=CC(=C(C=C230)C231=CC(=C(C=C231)C232=CC(=C(C=C232)C233=CC(=C(C=C233)C234=CC(=C(C=C234)C235=CC(=C(C=C235)C236=CC(=C(C=C236)C237=CC(=C(C=C237)C238=CC(=C(C=C238)C239=CC(=C(C=C239)C240=CC(=C(C=C240)C241=CC(=C(C=C241)C242=CC(=C(C=C242)C243=CC(=C(C=C243)C244=CC(=C(C=C244)C245=CC(=C(C=C245)C246=CC(=C(C=C246)C247=CC(=C(C=C247)C248=CC(=C(C=C248)C249=CC(=C(C=C249)C250=CC(=C(C=C250)C251=CC(=C(C=C251)C252=CC(=C(C=C252)C253=CC(=C(C=C253)C254=CC(=C(C=C254)C255=CC(=C(C=C255)C256=CC(=C(C=C256)C257=CC(=C(C=C257)C258=CC(=C(C=C258)C259=CC(=C(C=C259)C260=CC(=C(C=C260)C261=CC(=C(C=C261)C262=CC(=C(C=C262)C263=CC(=C(C=C263)C264=CC(=C(C=C264)C265=CC(=C(C=C265)C266=CC(=C(C=C266)C267=CC(=C(C=C267)C268=CC(=C(C=C268)C269=CC(=C(C=C269)C270=CC(=C(C=C270)C271=CC(=C(C=C271)C272=CC(=C(C=C272)C273=CC(=C(C=C273)C274=CC(=C(C=C274)C275=CC(=C(C=C275)C276=CC(=C(C=C276)C277=CC(=C(C=C277)C278=CC(=C(C=C278)C279=CC(=C(C=C279)C280=CC(=C(C=C280)C281=CC(=C(C=C281)C282=CC(=C(C=C282)C283=CC(=C(C=C283)C284=CC(=C(C=C284)C285=CC(=C(C=C285)C286=CC(=C(C=C286)C287=CC(=C(C=C287)C288=CC(=C(C=C288)C289=CC(=C(C=C289)C290=CC(=C(C=C290)C291=CC(=C(C=C291)C292=CC(=C(C=C292)C293=CC(=C(C=C293)C294=CC(=C(C=C294)C295=CC(=C(C=C295)C296=CC(=C(C=C296)C297=CC(=C(C=C297)C298=CC(=C(C=C298)C299=CC(=C(C=C299)C300=CC(=C(C=C300)C301=CC(=C(C=C301)C302=CC(=C(C=C302)C303=CC(=C(C=C303)C304=CC(=C(C=C304)C305=CC(=C(C=C305)C306=CC(=C(C=C306)C307=CC(=C(C=C307)C308=CC(=C(C=C308)C309=CC(=C(C=C309)C310=CC(=C(C=C310)C311=CC(=C(C=C311)C312=CC(=C(C=C312)C313=CC(=C(C=C313)C314=CC(=C(C=C314)C315=CC(=C(C=C315)C316=CC(=C(C=C316)C317=CC(=C(C=C317)C318=CC(=C(C=C318)C319=CC(=C(C=C319)C320=CC(=C(C=C320)C321=CC(=C(C=C321)C322=CC(=C(C=C322)C323=CC(=C(C=C323)C324=CC(=C(C=C324)C325=CC(=C(C=C325)C326=CC(=C(C=C326)C327=CC(=C(C=C327)C328=CC(=C(C=C328)C329=CC(=C(C=C329)C330=CC(=C(C=C330)C331=CC(=C(C=C331)C332=CC(=C(C=C332)C333=CC(=C(C=C333)C334=CC(=C(C=C334)C335=CC(=C(C=C335)C336=CC(=C(C=C336)C337=CC(=C(C=C337)C338=CC(=C(C=C338)C339=CC(=C(C=C339)C340=CC(=C(C=C340)C341=CC(=C(C=C341)C342=CC(=C(C=C342)C343=CC(=C(C=C343)C344=CC(=C(C=C344)C345=CC(=C(C=C345)C346=CC(=C(C=C346)C347=CC(=C(C=C347)C348=CC(=C(C=C348)C349=CC(=C(C=C349)C350=CC(=C(C=C350)C351=CC(=C(C=C351)C352=CC(=C(C=C352)C353=CC(=C(C=C353)C354=CC(=C(C=C354)C355=CC(=C(C=C355)C356=CC(=C(C=C356)C357=CC(=C(C=C357)C358=CC(=C(C=C358)C359=CC(=C(C=C359)C360=CC(=C(C=C360)C361=CC(=C(C=C361)C362=CC(=C(C=C362)C363=CC(=C(C=C363)C364=CC(=C(C=C364)C365=CC(=C(C=C365)C366=CC(=C(C=C366)C367=CC(=C(C=C367)C368=CC(=C(C=C368)C369=CC(=C(C=C369)C370=CC(=C(C=C370)C371=CC(=C(C=C371)C372=CC(=C(C=C372)C373=CC(=C(C=C373)C374=CC(=C(C=C374)C375=CC(=C(C=C375)C376=CC(=C(C=C376)C377=CC(=C(C=C377)C378=CC(=C(C=C378)C379=CC(=C(C=C379)C380=CC(=C(C=C380)C381=CC(=C(C=C381)C382=CC(=C(C=C382)C383=CC(=C(C=C383)C384=CC(=C(C=C384)C385=CC(=C(C=C385)C386=CC(=C(C=C386)C387=CC(=C(C=C387)C388=CC(=C(C=C388)C389=CC(=C(C=C389)C390=CC(=C(C=C390)C391=CC(=C(C=C391)C392=CC(=C(C=C392)C393=CC(=C(C=C393)C394=CC(=C(C=C394)C395=CC(=C(C=C395)C396=CC(=C(C=C396)C397=CC(=C(C=C397)C398=CC(=C(C=C398)C399=CC(=C(C=C399)C400=CC(=C(C=C400)C401=CC(=C(C=C401)C402=CC(=C(C=C402)C403=CC(=C(C=C403)C404=CC(=C(C=C404)C405=CC(=C(C=C405)C406=CC(=C(C=C406)C407=CC(=C(C=C407)C408=CC(=C(C=C408)C409=CC(=C(C=C409)C410=CC(=C(C=C410)C411=CC(=C(C=C411)C412=CC(=C(C=C412)C413=CC(=C(C=C413)C414=CC(=C(C=C414)C415=CC(=C(C=C415)C416=CC(=C(C=C416)C417=CC(=C(C=C417)C418=CC(=C(C=C418)C419=CC(=C(C=C419)C420=CC(=C(C=C420)C421=CC(=C(C=C421)C422=CC(=C(C=C422)C423=CC(=C(C=C423)C424=CC(=C(C=C424)C425=CC(=C(C=C425)C426=CC(=C(C=C426)C427=CC(=C(C=C427)C428=CC(=C(C=C428)C429=CC(=C(C=C429)C430=CC(=C(C=C430)C431=CC(=C(C=C431)C432=CC(=C(C=C432)C433=CC(=C(C=C433)C434=CC(=C(C=C434)C435=CC(=C(C=C435)C436=CC(=C(C=C436)C437=CC(=C(C=C437)C438=CC(=C(C=C438)C439=CC(=C(C=C439)C440=CC(=C(C=C440)C441=CC(=C(C=C441)C442=CC(=C(C=C442)C443=CC(=C(C=C443)C444=CC(=C(C=C444)C445=CC(=C(C=C445)C446=CC(=C(C=C446)C447=CC(=C(C=C447)C448=CC(=C(C=C448)C449=CC(=C(C=C449)C450=CC(=C(C=C450)C451=CC(=C(C=C451)C452=CC(=C(C=C452)C453=CC(=C(C=C453)C454=CC(=C(C=C454)C455=CC(=C(C=C455)C456=CC(=C(C=C456)C457=CC(=C(C=C457)C458=CC(=C(C=C458)C459=CC(=C(C=C459)C460=CC(=C(C=C460)C461=CC(=C(C=C461)C462=CC(=C(C=C462)C463=CC(=C(C=C463)C464=CC(=C(C=C464)C465=CC(=C(C=C465)C466=CC(=C(C=C466)C467=CC(=C(C=C467)C468=CC(=C(C=C468)C469=CC(=C(C=C469)C470=CC(=C(C=C470)C471=CC(=C(C=C471)C472=CC(=C(C=C472)C473=CC(=C(C=C473)C474=CC(=C(C=C474)C475=CC(=C(C=C475)C476=CC(=C(C=C476)C477=CC(=C(C=C477)C478=CC(=C(C=C478)C479=CC(=C(C=C479)C480=CC(=C(C=C480)C481=CC(=C(C=C481)C482=CC(=C(C=C482)C483=CC(=C(C=C483)C484=CC(=C(C=C484)C485=CC(=C(C=C485)C486=CC(=C(C=C486)C487=CC(=C(C=C487)C488=CC(=C(C=C488)C489=CC(=C(C=C489)C490=CC(=C(C=C490)C491=CC(=C(C=C491)C492=CC(=C(C=C492)C493=CC(=C(C=C493)C494=CC(=C(C=C494)C495=CC(=C(C=C495)C496=CC(=C(C=C496)C497=CC(=C(C=C497)C498=CC(=C(C=C498)C499=CC(=C(C=C499)C500=CC(=C(C=C500)C501=CC(=C(C=C501)C502=CC(=C(C=C502)C503=CC(=C(C=C503)C504=CC(=C(C=C504)C505=CC(=C(C=C505)C506=CC(=C(C=C506)C507=CC(=C(C=C507)C508=CC(=C(C=C508)C509=CC(=C(C=C509)C510=CC(=C(C=C510)C511=CC(=C(C=C511)C512=CC(=C(C=C512)C513=CC(=C(C=C513)C514=CC(=C(C=C514)C515=CC(=C(C=C515)C516=CC(=C(C=C516)C517=CC(=C(C=C517)C518=CC(=C(C=C518)C519=CC(=C(C=C519)C520=CC(=C(C=C520)C521=CC(=C(C=C521)C522=CC(=C(C=C522)C523=CC(=C(C=C523)C524=CC(=C(C=C524)C525=CC(=C(C=C525)C526=CC(=C(C=C526)C527=CC(=C(C=C527)C528=CC(=C(C=C528)C529=CC(=C(C=C529)C530=CC(=C(C=C530)C531=CC(=C(C=C531)C532=CC(=C(C=C532)C533=CC(=C(C=C533)C534=CC(=C(C=C534)C535=CC(=C(C=C535)C536=CC(=C(C=C536)C537=CC(=C(C=C537)C538=CC(=C(C=C538)C539=CC(=C(C=C539)C540=CC(=C(C=C540)C541=CC(=C(C=C541)C542=CC(=C(C=C542)C543=CC(=C(C=C543)C544=CC(=C(C=C544)C545=CC(=C(C=C545)C546=CC(=C(C=C546)C547=CC(=C(C=C547)C548=CC(=C(C=C548)C549=CC(=C(C=C549)C550=CC(=C(C=C550)C551=CC(=C(C=C551)C552=CC(=C(C=C552)C553=CC(=C(C=C553)C554=CC(=C(C=C554)C555=CC(=C(C=C555)C556=CC(=C(C=C556)C557=CC(=C(C=C557)C558=CC(=C(C=C558)C559=CC(=C(C=C559)C560=CC(=C(C=C560)C561=CC(=C(C=C561)C562=CC(=C(C=C562)C563=CC(=C(C=C563)C564=CC(=C(C=C564)C565=CC(=C(C=C565)C566=CC(=C(C=C566)C567=CC(=C(C=C567)C568=CC(=C(C=C568)C569=CC(=C(C=C569)C570=CC(=C(C=C570)C571=CC(=C(C=C571)C572=CC(=C(C=C572)C573=CC(=C(C=C573)C574=CC(=C(C=C574)C575=CC(=C(C=C575)C576=CC(=C(C=C576)C577=CC(=C(C=C577)C578=CC(=C(C=C578)C579=CC(=C(C=C579)C580=CC(=C(C=C580)C581=CC(=C(C=C581)C582=CC(=C(C=C582)C583=CC(=C(C=C583)C584=CC(=C(C=C584)C585=CC(=C(C=C585)C586=CC(=C(C=C586)C587=CC(=C(C=C587)C588=CC(=C(C=C588)C589=CC(=C(C=C589)C590=CC(=C(C=C590)C591=CC(=C(C=C591)C592=CC(=C(C=C592)C593=CC(=C(C=C593)C594=CC(=C(C=C594)C595=CC(=C(C=C595)C596=CC(=C(C=C596)C597=CC(=C(C=C597)C598=CC(=C(C=C598)C599=CC(=C(C=C599)C600=CC(=C(C=C600)C601=CC(=C(C=C601)C602=CC(=C(C=C602)C603=CC(=C(C=C603)C604=CC(=C(C=C604)C605=CC(=C(C=C605)C606=CC(=C(C=C606)C607=CC(=C(C=C607)C608=CC(=C(C=C608)C609=CC(=C(C=C609)C610=CC(=C(C=C610)C611=CC(=C(C=C611)C612=CC(=C(C=C612)C613=CC(=C(C=C613)C614=CC(=C(C=C614)C615=CC(=C(C=C615)C616=CC(=C(C=C616)C617=CC(=C(C=C617)C618=CC(=C(C=C618)C619=CC(=C(C=C619)C620=CC(=C(C=C620)C621=CC(=C(C=C621)C622=CC(=C(C=C622)C623=CC(=C(C=C623)C624=CC(=C(C=C624)C625=CC(=C(C=C625)C626=CC(=C(C=C626)C627=CC(=C(C=C627)C628=CC(=C(C=C628)C629=CC(=C(C=C629)C630=CC(=C(C=C630)C631=CC(=C(C=C631)C632=CC(=C(C=C632)C633=CC(=C(C=C633)C634=CC(=C(C=C634)C635=CC(=C(C=C635)C636=CC(=C(C=C636)C637=CC(=C(C=C637)C638=CC(=C(C=C638)C639=CC(=C(C=C639)C640=CC(=C(C=C640)C641=CC(=C(C=C641)C642=CC(=C(C=C642)C643=CC(=C(C=C643)C644=CC(=C(C=C644)C645=CC(=C(C=C645)C646=CC(=C(C=C646)C647=CC(=C(C=C647)C648=CC(=C(C=C648)C649=CC(=C(C=C649)C650=CC(=C(C=C650)C651=CC(=C(C=C651)C652=CC(=C(C=C652)C653=CC(=C(C=C653)C654=CC(=C(C=C654)C655=CC(=C(C=C655)C656=CC(=C(C=C656)C657=CC(=C(C=C657)C658=CC(=C(C=C658)C659=CC(=C(C=C659)C660=CC(=C(C=C660)C661=CC(=C(C=C661)C662=CC(=C(C=C662)C663=CC(=C(C=C663)C664=CC(=C(C=C664)C665=CC(=C(C=C665)C666=CC(=C(C=C666)C667=CC(=C(C=C667)C668=CC(=C(C=C668)C669=CC(=C(C=C669)C670=CC(=C(C=C670)C671=CC(=C(C=C671)C672=CC(=C(C=C672)C673=CC(=C(C=C673)C674=CC(=C(C=C674)C675=CC(=C(C=C675)C676=CC(=C(C=C676)C677=CC(=C(C=C677)C678=CC(=C(C=C678)C679=CC(=C(C=C679)C680=CC(=C(C=C680)C681=CC(=C(C=C681)C682=CC(=C(C=C682)C683=CC(=C(C=C683)C684=CC(=C(C=C684)C685=CC(=C(C=C685)C686=CC(=C(C=C686)C687=CC(=C(C=C687)C688=CC(=C(C=C688)C689=CC(=C(C=C689)C690=CC(=C(C=C690)C691=CC(=C(C=C691)C692=CC(=C(C=C692)C693=CC(=C(C=C693)C694=CC(=C(C=C694)C695=CC(=C(C=C695)C696=CC(=C(C=C696)C697=CC(=C(C=C697)C698=CC(=C(C=C698)C699=CC(=C(C=C699)C700=CC(=C(C=C700)C701=CC(=C(C=C701)C702=CC(=C(C=C702)C703=CC(=C(C=C703)C704=CC(=C(C=C704)C705=CC(=C(C=C705)C706=CC(=C(C=C706)C707=CC(=C(C=C707)C708=CC(=C(C=C708)C709=CC(=C(C=C709)C710=CC(=C(C=C710)C711=CC(=C(C=C711)C712=CC(=C(C=C712)C713=CC(=C(C=C713)C714=CC(=C(C=C714)C715=CC(=C(C=C715)C716=CC(=C(C=C716)C717=CC(=C(C=C717)C718=CC(=C(C=C718)C719=CC(=C(C=C719)C720=CC(=C(C=C720)C721=CC(=C(C=C721)C722=CC(=C(C=C722)C723=CC(=C(C=C723)C724=CC(=C(C=C724)C725=CC(=C(C=C725)C726=CC(=C(C=C726)C727=CC(=C(C=C727)C728=CC(=C(C=C728)C729=CC(=C(C=C729)C730=CC(=C(C=C730)C731=CC(=C(C=C731)C732=CC(=C(C=C732)C733=CC(=C(C=C733)C734=CC(=C(C=C734)C735=CC(=C(C=C735)C736=CC(=C(C=C736)C737=CC(=C(C=C737)C738=CC(=C(C=C738)C739=CC(=C(C=C739)C740=CC(=C(C=C740)C741=CC(=C(C=C741)C742=CC(=C(C=C742)C743=CC(=C(C=C743)C744=CC(=C(C=C744)C745=CC(=C(C=C745)C746=CC(=C(C=C746)C747=CC(=C(C=C747)C748=CC(=C(C=C748)C749=CC(=C(C=C749)C750=CC(=C(C=C750)C751=CC(=C(C=C751)C752=CC(=C(C=C752)C753=CC(=C(C=C753)C754=CC(=C(C=C754)C755=CC(=C(C=C755)C756=CC(=C(C=C756)C757=CC(=C(C=C757)C758=CC(=C(C=C758)C759=CC(=C(C=C759)C760=CC(=C(C=C760)C761=CC(=C(C=C761)C762