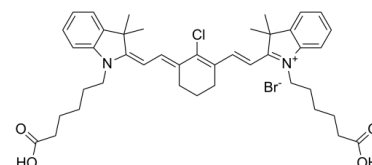


Data Sheet

Product Name:	MHI-148
Cat. No.:	CS-0615987
CAS No.:	172971-76-5
Molecular Formula:	C ₄₂ H ₅₂ BrClN ₂ O ₄
Molecular Weight:	764.23
Target:	Fluorescent Dye
Pathway:	Others
Solubility:	10 mM in DMSO



BIOLOGICAL ACTIVITY:

MHI-148 is a near-infrared heptamethine cyanine dye with tumor-targeting properties for cancer detection, diagnosis and research. MHI-148 is immediately taken up and accumulated by lysosomes and mitochondria of tumor cells, but not in lysosomes and mitochondria of normal cells^[1]. *In Vitro*: MHI-148 (10 µM, 1 h) is significantly more absorbed in HT-29 colon carcinoma cells than in normal NIH3T3 fibroblasts and has tumor imaging and targeting properties^[1]. MHI-148 (0-1.5 µM, 3 days) causes only negligible toxicity in HT-29 and NIH3T3 cells^[1].

References:

[1]. Athira Raveendran, et al. Heptamethine Cyanine Dye MHI-148-Mediated Drug Delivery System to Enhance the Anticancer Efficiency of Paclitaxel. Int J Nanomedicine. 2021 Oct 21;16:7169-7180.

CAS Index Names:

3H-Indolium, 1-(5-carboxypentyl)-2-[2-[3-[2-[1-(5-carboxypentyl)-1,3-dihydro-3,3-dimethyl-2H-indol-2-ylidene]ethylydene]-2-chloro-1-cyclohexen-1-yl]ethenyl]-3,3-dimethyl-, bromide (1:1)

SMILES:

CC(C1=CC=CC=C1N2CCCCC(O)=O)(C)C2=C/C=C3CCCC(/C=C/C4=[N+](CCCCC(O)=O)C5=CC=CC=C5C4(C)C)=C\3Cl.[Br-]

Caution: Product has not been fully validated for medical applications. For research use only.

Tel: 610-426-3128

Fax: 888-484-5008

E-mail: sales@ChemScene.com

Address: 1 Deer Park Dr, Suite Q, Monmouth Junction, NJ 08852, USA