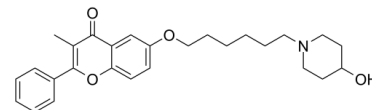


Data Sheet

Product Name:	Sigma-LIGAND-1
Cat. No.:	CS-7320
CAS No.:	139652-01-0
Molecular Formula:	C ₂₇ H ₃₃ NO ₄
Molecular Weight:	435.56
Target:	Sigma Receptor
Pathway:	Neuronal Signaling
Solubility:	DMSO : 100 mg/mL (229.59 mM; Need ultrasonic)



BIOLOGICAL ACTIVITY:

Sigma-LIGAND-1 is a selective **sigma receptor** ligand with an **IC₅₀**s of 16 nM, 19 nM at the DTG site and the PPP site, respectively. Sigma-LIGAND-1 has a **K_i** of 4000 nM at the dopamine D₂ receptor^[1]. IC₅₀ & Target: IC₅₀: 16 nM (DTG site of sigma receptor), 19 nM (PPP site of sigma receptor)^[1]

Ki: 4000 nM (Dopamine D2 receptor)^[1]

In Vivo: Administration of Sigma-LIGAND-1 would reverse amphetamine-induced hyperlocomotion in mice, a behavioral model sensitive to antipsychotic compounds. Sigma-LIGAND-1 and its structural analogues have the potential antipsychotic activity^[1].

PROTOCOL (Extracted from published papers and Only for reference)

Animal Administration: Administration of Sigma-LIGAND-1 would reverse amphetamine-induced hyperlocomotion in mice, a behavioral model sensitive to antipsychotic compounds. Sigma-LIGAND-1 and its structural analogues have the potential antipsychotic activity^[1].

References:

[1]. Erickson RH, et al. (Aminoalkoxy)chromones. Selective sigma receptor ligands. J Med Chem. 1992 May 1;35(9):1526-35.

CAIndexNames:

4H-1-Benzopyran-4-one, 6-[[6-(4-hydroxy-1-piperidinyl)hexyl]oxy]-3-methyl-2-phenyl-

SMILES:

O=C1C(C)=C(C2=CC=CC=C2)OC3=CC=C(OCCCCCN4CCC(O)CC4)C=C13

Caution: Product has not been fully validated for medical applications. For research use only.

Tel: 610-426-3128

Fax: 888-484-5008

E-mail: sales@ChemScene.com

Address: 1 Deer Park Dr, Suite Q, Monmouth Junction, NJ 08852, USA