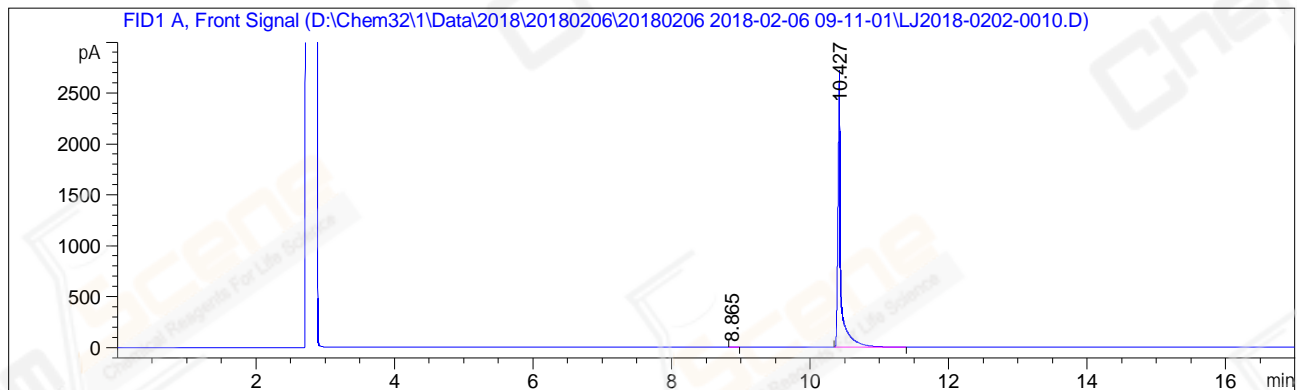


```
=====  
Acq. Operator   : LSL_985                      Seq. Line : 13  
Acq. Instrument : GC7890                       Location  : 13 (F)  
Injection Date  : 2/6/2018 1:31:30 PM          Inj       : 1  
                                           Inj Volume: 1 µl  
Acq. Method     : D:\Chem32\1\Data\2018\20180206\20180206 2018-02-06 09-11-01\GC-FQ.M  
Last changed    : 2/6/2018 9:11:01 AM by LSL_985  
Analysis Method : D:\Chem32\1\Data\2018\20180206\20180206 2018-02-06 09-11-01\GC-FQ.M ( Sequence Method)  
Last changed    : 2/7/2018 1:57:53 PM by LSL_985  
                  (modified after loading)  
Catalog No     : CS-W021820 Batch#Lb0d11 A-CP-21  
=====
```

Additional Info : Peak(s) manually integrated



=====
Area Percent Report
=====

Sorted By : Signal
Multiplier : 1.0000
Dilution : 1.0000
Do not use Multiplier & Dilution Factor with ISTDs

Signal 1: FID1 A, Front Signal

Peak #	RetTime [min]	Type	Width [min]	Area [pA*s]	Height [pA]	Area %
1	8.865	MM	0.0615	1.69481	4.58983e-1	0.02119
2	10.427	BB	0.0416	7995.85010	2708.83960	99.97881

Totals : 7997.54490 2709.29858

=====
*** End of Report ***