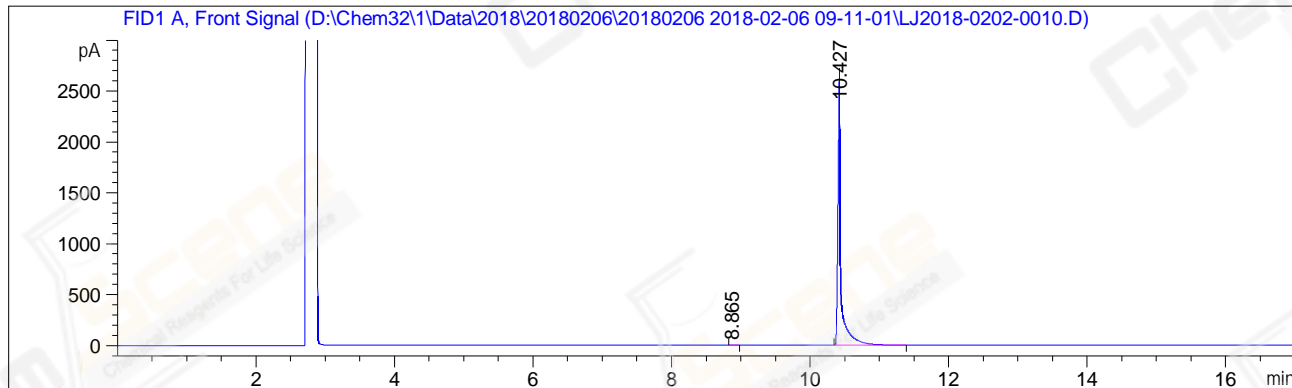


```
=====
Acq. Operator   : LSL_985                      Seq. Line :   13
Acq. Instrument : GC7890                      Location  :   13 (F)
Injection Date  : 2/6/2018 1:31:30 PM         Inj       :    1
                                                Inj Volume: 1 µl
Acq. Method     : D:\Chem32\1\Data\2018\20180206\20180206 2018-02-06 09-11-01\GC-FQ.M
Last changed    : 2/6/2018 9:11:01 AM by LSL_985
Analysis Method : D:\Chem32\1\Data\2018\20180206\20180206 2018-02-06 09-11-01\GC-FQ.M (
                  Sequence Method)
Last changed    : 2/7/2018 1:57:53 PM by LSL_985
                  (modified after loading)
Catalog No     : CS-W021820 Batch#Lb0d11 A-CP-21
=====
```

Additional Info : Peak(s) manually integrated



Area Percent Report

```
Sorted By       : Signal
Multiplier      : 1.0000
Dilution        : 1.0000
Do not use Multiplier & Dilution Factor with ISTDs
```

Signal 1: FID1 A, Front Signal

Peak #	RetTime [min]	Type	Width [min]	Area [pA*s]	Height [pA]	Area %
1	8.865	MM	0.0615	1.69481	4.58983e-1	0.02119
2	10.427	BB	0.0416	7995.85010	2708.83960	99.97881

Totals : 7997.54490 2709.29858

*** End of Report ***