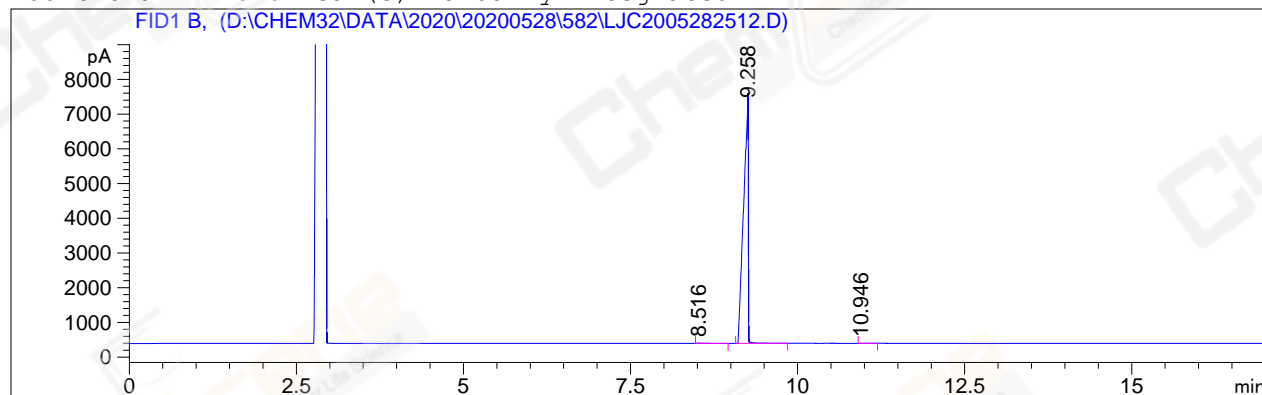


=====  
Acq. Operator : ylq\_1768 Seq. Line : 14  
Acq. Instrument : GC-06 Location : 80 (B)  
Injection Date : 5/28/2020 22:11:53 Inj : 1  
 Inj Volume: 1 µl  
Acq. Method : D:\CHEM32\DATA\2020\20200528\582\GC-FQ.M  
Last changed : 5/28/2020 16:27:15 by ylq\_1768  
Analysis Method : D:\CHEM32\DATA\2020\20200528\582\GC-FQ.M (Sequence Method)  
Last changed : 5/29/2020 09:00:49 by ylq\_1768  
CAS NO. : 22532-62-3 (BY ACN) HP-5 A-CP-51

Additional Info : Peak(s) manually integrated



=====  
Area Percent Report  
=====

Sorted By : Signal  
Multiplier : 1.0000  
Dilution : 1.0000  
Do not use Multiplier & Dilution Factor with ISTDs

Signal 1: FID1 B,

Peak #	RetTime [min]	Type	Width [min]	Area [pA*s]	Height [pA]	Area %
1	8.516	BB	0.1129	77.12375	8.71044	0.22081
2	9.258	BB	0.0601	3.48205e4	7241.41992	99.69198
3	10.946	BB	0.1048	30.46269	3.82834	0.08722

Totals : 3.49280e4 7253.95870

=====  
\*\*\* End of Report \*\*\*  
=====