

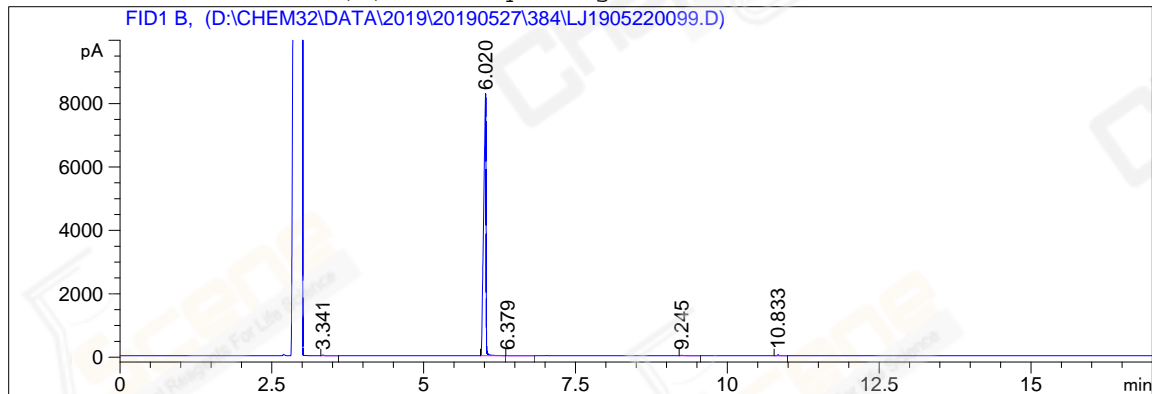
```
=====
Acq. Operator   : YSS_1194                      Seq. Line :   24
Acq. Instrument : GC-06                         Location  :   62 (B)
Injection Date  : 5/28/2019 5:18:39 AM          Inj       :    1
                                                Inj Volume: 1 µl

Acq. Method     : D:\CHEM32\DATA\2019\20190527\384\GC-FQ.M
Last changed    : 5/27/2019 7:01:09 PM by YSS_1194
Analysis Method : D:\CHEM32\DATA\2019\20190527\384\GC-FQ.M (Sequence Method)
Last changed    : 5/28/2019 12:42:48 PM by YSS_1194
                  (modified after loading)

Method Info     : test

Sample Info     : (BY ACN) HP-5 A-CP-43
=====
```

Additional Info : Peak(s) manually integrated



=====
Area Percent Report
=====

Sorted By : Signal
Multiplier : 1.0000
Dilution : 1.0000
Do not use Multiplier & Dilution Factor with ISTDs

Signal 1: FID1 B,

Peak #	RetTime [min]	Type	Width [min]	Area [pA*s]	Height [pA]	Area %
1	3.341	VB	0.0358	45.04028	20.07763	0.20141
2	6.020	BV	0.0395	2.21993e4	8211.96777	99.27042
3	6.379	VB	0.0717	28.84018	5.02939	0.12897
4	9.245	BB	0.0493	49.70211	13.26112	0.22226
5	10.833	BB	0.0251	39.56952	23.62807	0.17695

Totals : 2.23624e4 8273.96399

=====
*** End of Report ***