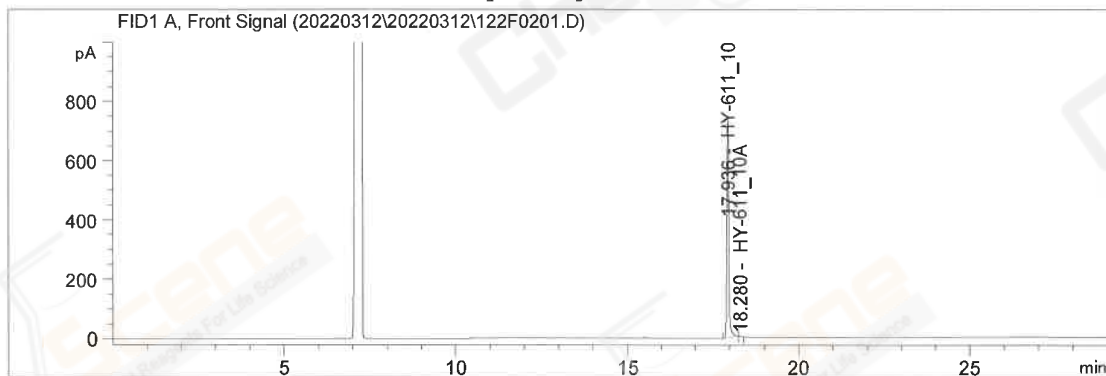


Acq. Operator : YSS_1194 Seq. Line : 3
 Acq. Instrument : GC-03 Location : 122 (F)
 Injection Date : 3/12/2022 13:40:12 Inj : 1
 CAS NO. : 5239-82-7 Inj Volume : 0.5 µl
 Acq. Method : d:\Chem32\1\Data\20220312\20220312\HY-611_10-H01RS(GC).M
 Last changed : 3/12/2022 12:27:39 by YSS_1194
 Analysis Method : d:\Chem32\1\Data\20220312\20220312\HY-611_10-H01RS(GC).M (Sequence Method)
 Last changed : 3/12/2022 16:51:13 by YSS_1194
 Sample Info : HY-611_10-20220310 (BY ACN) (DB-624 A-CP-73)

Additional Info : Peak(s) manually integrated



=====
 Area Percent Report
 =====

Sorted By : Signal
 Calib. Data Modified : 3/12/2022 16:49:19
 Multiplier : 1.0000
 Dilution : 1.0000
 Do not use Multiplier & Dilution Factor with ISTDs

Signal 1: FID1 A, Front Signal

Peak #	RetTime [min]	Type	Width [min]	Area [pA*s]	Area %	Name
1	17.936	MM	0.0663	2917.85059	99.95771	HY-611_10
2	18.280	MM	0.0457	1.23447	0.04229	HY-611_10A

Totals : 2919.08506

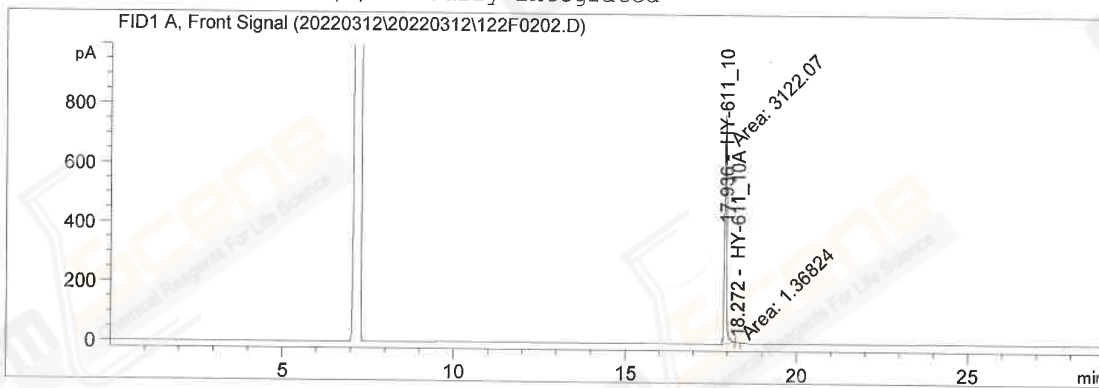
1 Warnings or Errors :

Warning : Calibration warnings (see calibration table listing)

=====
 *** End of Report ***

Acq. Operator : YSS_1194 Seq. Line : 4
 Acq. Instrument : GC-03 Location : 122 (F)
 Injection Date : 3/12/2022 14:15:25 Inj : 2
 CASNO. : 5239-82-7 Inj Volume : 0.5 µl
 Acq. Method : d:\Chem32\1\Data\20220312\20220312\HY-611_10-H01RS(GC).M
 Last changed : 3/12/2022 12:27:39 by YSS_1194
 Analysis Method : d:\Chem32\1\Data\20220312\20220312\HY-611_10-H01RS(GC).M (Sequence Method)
 Last changed : 3/12/2022 16:51:13 by YSS_1194
 Sample Info : HY-611_10-20220310 (BY ACN) (DB-624 A-CP-73)

Additional Info : Peak(s) manually integrated



=====
 Area Percent Report
 =====

Sorted By : Signal
 Calib. Data Modified : 3/12/2022 16:49:19
 Multiplier : 1.0000
 Dilution : 1.0000
 Do not use Multiplier & Dilution Factor with ISTDs

Signal 1: FID1 A, Front Signal

Peak #	RetTime [min]	Type	Width [min]	Area [pA*s]	Area %	Name
1	17.936	MM	0.0675	3122.06934	99.95619	HY-611_10
2	18.272	MM	0.0486	1.36824	0.04381	HY-611_10A

Totals : 3123.43758

1 Warnings or Errors :

Warning : Calibration warnings (see calibration table listing)

=====
 *** End of Report ***