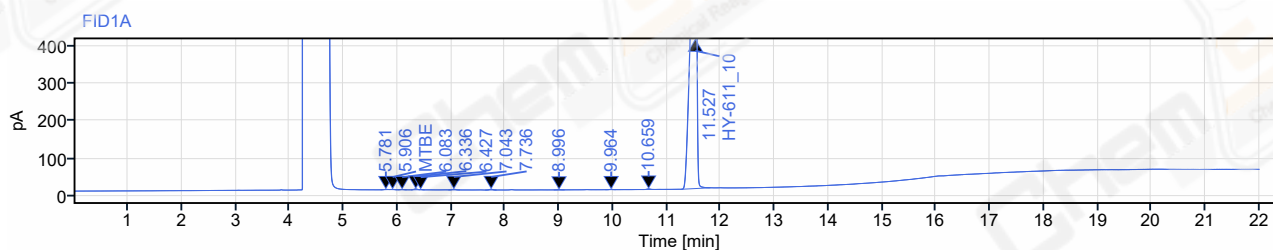
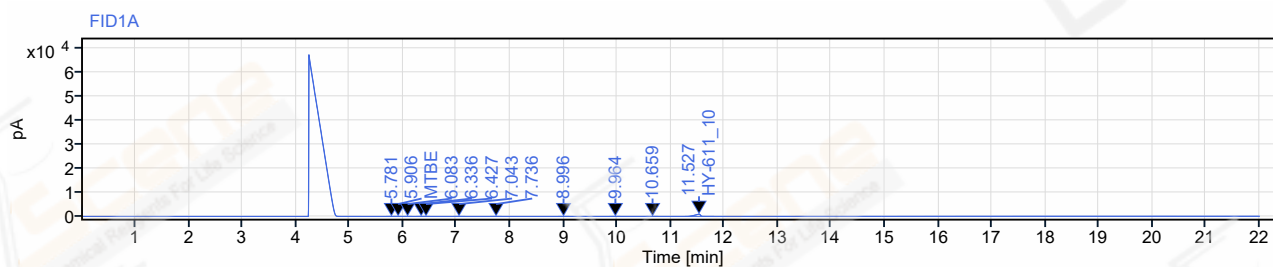


Data file: YJL12713-007-10-5_2.dx
Sequence Name: 20220504-1
Sample name: YJL12713-007-10-5_2
Instrument: GC-10
Inj. volume: 1.000 µL
Acq. method: HY-611_10-H01RS02(GC).amx
Processing method: HY-611_10.pmx
Manually modified: Manual Integration

CAS NO.: 5239-82-7
Project Name: HY-611_RD
Operator: gmm2670
Injection date: 2022-05-04 11:44:58+08:00
Location: 2
Type: Sample
Sample amount: 0.00

Sample Description HY-611_10-20220503
 5mg/ml(BY ACN) CP-
 Volamine(A-CP-116)



Signal:	FID1A					
RT [min]	Type	Width [min]	Area	Height	Area%	Name
5.781	MM m	0.16	2.90	0.68	0.04	
5.906	MM m	0.15	2.68	0.62	0.04	MTBE
6.083	MM m	0.16	3.41	0.72	0.05	
6.336	MM m	0.15	9.55	2.10	0.14	
6.427	MM m	0.10	2.24	0.66	0.03	
7.043	MM m	0.22	7.95	1.63	0.12	
7.736	BB	0.21	9.01	1.95	0.13	
8.996	MM m	0.20	1.49	0.33	0.02	
9.964	MM m	0.20	2.74	0.64	0.04	
10.659	MM m	0.21	6.33	1.51	0.09	
11.527	BM m	0.54	6797.54	942.63	99.29	HY-611_10
	Sum		6845.85			