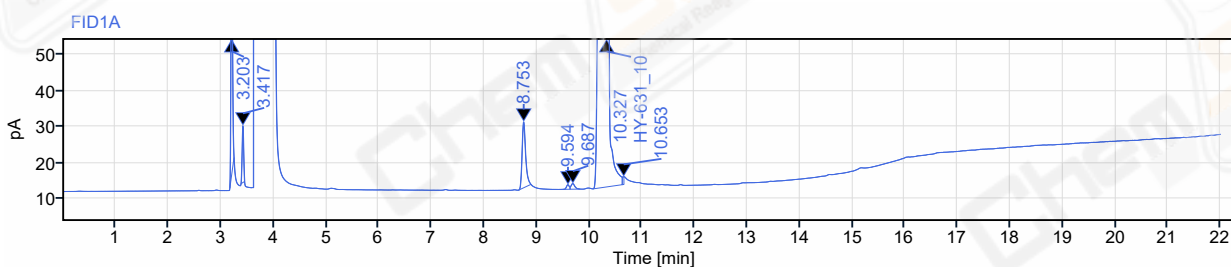
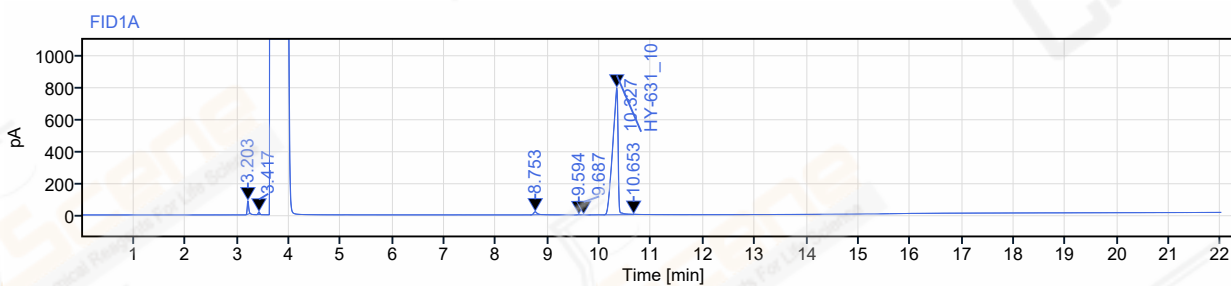


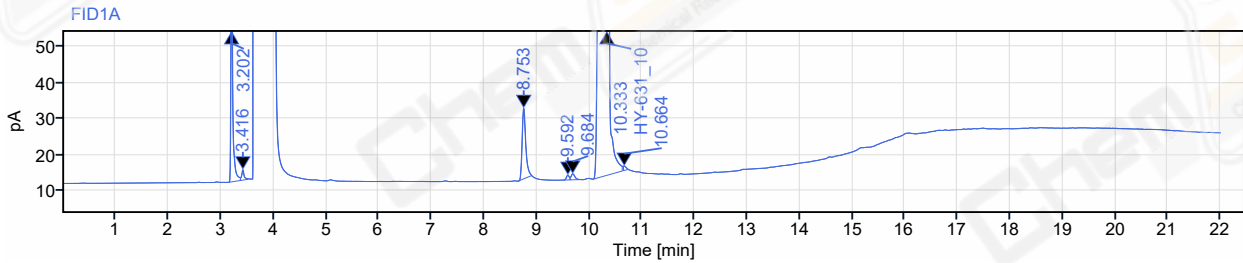
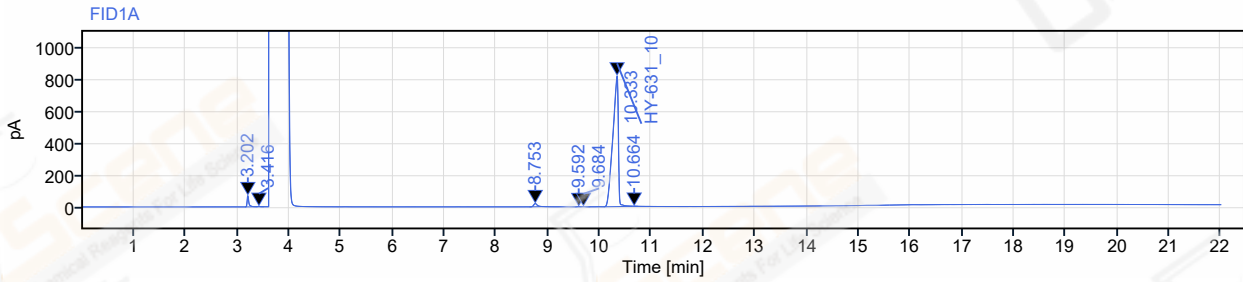
**Data file:** WJY15024-023-61110\_1.dx  
**Sequence Name:** GC-12-20221012-2 **Project\_Namer:** HY-631  
**CAS NO.:** 5239-82-7 **Operator:** DY1900  
**Instrument:** GC-12 **Injection date:** 2022-10-12 18:45:40+08:00  
**Inj. volume:** 1.000 µL **Location:** 26  
**Acq. method:** HY-611\_10-H01RS02(GC).amx **Type:** Sample  
**Processing method:** \*HY-631\_10.pmx **LastModifiedBy:** DY1900  
**Sample Description:** (BY ACN 5mg/ml ) CP-Volamine A-CP-112 **Manually modified:** Manual Integration



**Signal:** FID1A

Name	RT [min]	Area	Area%	Height	Peak Theoretical Plates USP	Tail	Resolution USP	S/N
	3.203	155.9953	2.62	83.42	66685	1.39		
	3.417	31.3689	0.53	15.81	63536	1.02	4.11	
	8.753	85.4185	1.43	18.34	86086	1.62	61.50	
	9.594	4.6900	0.08	1.28	123180	0.83	7.35	
	9.687	7.8059	0.13	1.57	79426	1.61	0.75	
HY-631_10	10.327	5674.6124	95.15	790.33	46411	0.64	3.89	
	10.653	4.1006	0.07	2.16	10078	0.57	1.06	
	Sum	5963.99						

**Data file:** WJY15024-023-61110\_2.dx  
**Sequence Name:** GC-12-20221012-2 **Project\_Namer:** HY-631  
**CAS NO.:** 5239-82-7 **Operator:** DY1900  
**Instrument:** GC-12 **Injection date:** 2022-10-12 19:11:32+08:00  
**Inj. volume:** 1.000 µL **Location:** 27  
**Acq. method:** HY-611\_10-H01RS02(GC).amx **Type:** Sample  
**Processing method:** \*HY-631\_10.pmx **LastModifiedBy:** DY1900  
**Sample Description:** (BY ACN 5mg/ml ) CP-Volamine A-CP-112 **Manually modified:** Manual Integration



Signal: FID1A

Name	RT [min]	Area	Area%	Height	Peak Theoretical Plates USP	Tail	Resolution USP	S/N
	3.202	161.1190	2.57	70.17	61721	1.84		
	3.416	9.2613	0.15	2.89	36275	1.48	3.49	
	8.753	93.5889	1.49	19.65	84807	1.73	55.59	
	9.592	4.8723	0.08	1.35	130659	0.88	7.41	
	9.684	8.2607	0.13	1.66	79823	1.77	0.76	
HY-631_10	10.333	5996.6105	95.52	814.46	43068	0.64	3.86	
	10.664	3.8212	0.06	1.22	2289	3.48	0.60	
	Sum	6277.53						