

Catalog No: CS-0045540 Batch# 42416

=====

Acq. Operator : R&D	Seq. Line : 5
Acq. Instrument : GC-12-01	Location : 205 (B)
Injection Date : 6/25/2018 1:01:51 PM	Inj : 1
	Inj Volume : 1 µl

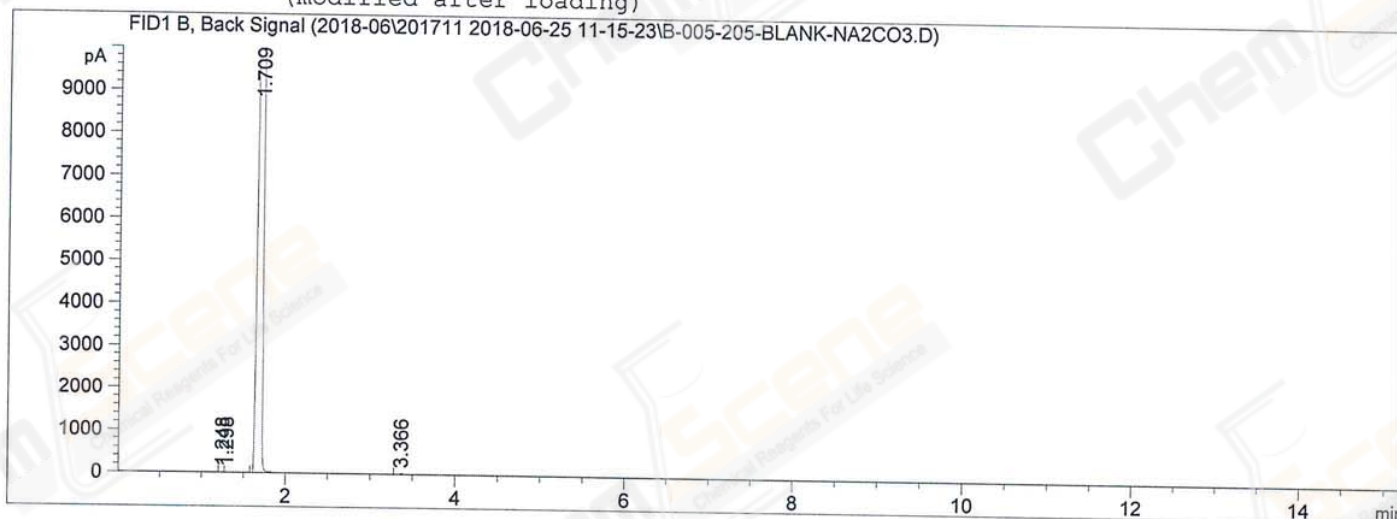
Different Inj Volume from Sample Entry! Actual Inj Volume : 0.5 µl

Acq. Method : D:\Chem32\1\Data\2018-06\201711 2018-06-25 11-15-23\General PB50-DB-624.M

Last changed : 6/25/2018 11:15:23 AM by R&D

Analysis Method : D:\Chem32\1\Data\2018-06\201711 2018-06-25 11-15-23\General PB50-DB-624.M (Sequence Method)

Last changed : 6/25/2018 3:12:32 PM by R&D
(modified after loading)



=====
Area Percent Report
=====

Sorted By : Signal
Multiplier : 1.0000
Dilution : 1.0000
Do not use Multiplier & Dilution Factor with ISTDs

Signal 1: FID1 B, Back Signal

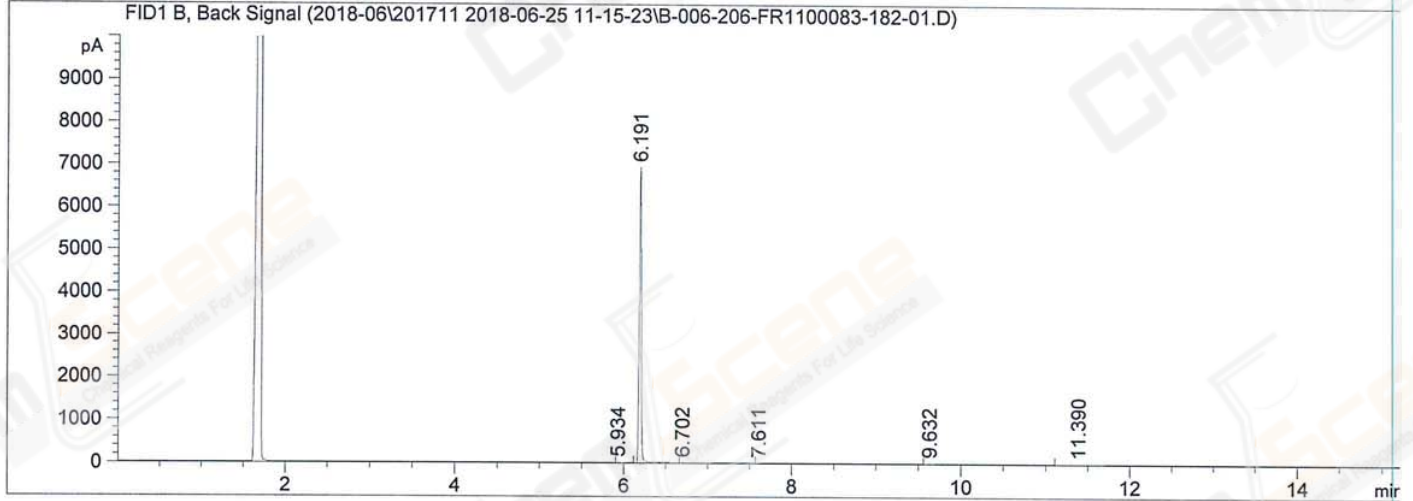
Peak #	RetTime [min]	Type	Width [min]	Area [pA*s]	Height [pA]	Area %
1	1.248	VV	0.0318	3.05544	1.28050	0.00368
2	1.298	VB	0.0475	18.82817	5.16457	0.02268
3	1.709	BV R	0.0415	8.29741e4	2.57810e4	99.94295
4	3.366	BB	0.0534	25.48291	7.45644	0.03069

Totals : 8.30215e4 2.57949e4

=====
*** End of Report ***

Catalog No: CS-0045540 Batch# 42416

=====
Acq. Operator : R&D Seq. Line : 6
Acq. Instrument : GC-12-01 Location : 206 (B)
Injection Date : 6/25/2018 1:28:13 PM Inj : 1
Inj Volume : 1 µl
Different Inj Volume from Sample Entry! Actual Inj Volume : 0.5 µl
Acq. Method : D:\Chem32\1\Data\2018-06\201711 2018-06-25 11-15-23\General PB50-DB-624.
M
Last changed : 6/25/2018 11:15:23 AM by R&D
Analysis Method : D:\Chem32\1\Data\2018-06\201711 2018-06-25 11-15-23\General PB50-DB-624.
M (Sequence Method)
Last changed : 6/25/2018 3:12:32 PM by R&D
(modified after loading)
Additional Info : Peak(s) manually integrated



=====
Area Percent Report
=====

Sorted By : Signal
Multiplier : 1.0000
Dilution : 1.0000
Do not use Multiplier & Dilution Factor with ISTDs

Signal 1: FID1 B, Back Signal

Peak #	RetTime [min]	Type	Width [min]	Area [pA*s]	Height [pA]	Area %
1	5.934	BB	0.0298	10.20085	5.22795	0.08599
2	6.191	BV R	0.0263	1.17921e4	6951.91504	99.39867
3	6.702	VB E	0.1004	29.85986	3.69225	0.25170
4	7.611	BV	0.0232	1.55886	1.02982	0.01314
5	9.632	BB	0.0362	10.54389	4.51686	0.08888
6	11.390	BB	0.1752	19.17551	1.28776	0.16164

Totals : 1.18634e4 6967.66967

=====
*** End of Report ***