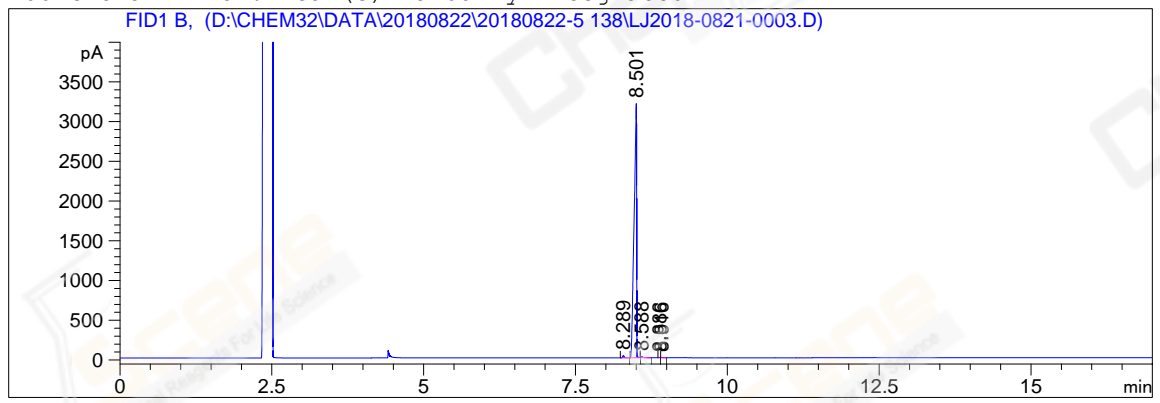


```
=====
Acq. Operator   : YSS_1194                      Seq. Line : 14
Acq. Instrument : GC-06                          Location  : 3 (B)
Injection Date  : 8/23/2018 12:45:23 AM          Inj       : 1
                                                    Inj Volume: 1 µl
Acq. Method     : D:\CHEM32\DATA\20180822\20180822-5 138\GC-FQ.M
Last changed    : 8/22/2018 7:31:44 PM by YSS_1194
Analysis Method : D:\CHEM32\DATA\20180822\20180822-5 138\GC-FQ.M (Sequence Method)
Last changed    : 8/23/2018 10:48:29 AM by YSS_1194
                  (modified after loading)
Method Info     : test
Catalog No      : CS-W001114 Batch#44223A-CP-32
=====
```

Additional Info : Peak(s) manually integrated



=====  
Area Percent Report  
=====

```
Sorted By      : Signal
Multiplier     : 1.0000
Dilution       : 1.0000
Do not use Multiplier & Dilution Factor with ISTDs
```

Signal 1: FID1 B,

Peak #	RetTime [min]	Type	Width [min]	Area [pA*s]	Height [pA]	Area %
1	8.289	BB	0.0223	41.99272	29.42110	0.45743
2	8.501	BV	0.0371	9094.48535	3201.21704	99.06772
3	8.588	VB	0.0257	31.57012	17.58743	0.34390
4	8.886	BV	0.0183	5.54345	4.78438	0.06039
5	8.916	VB	0.0227	6.47805	4.04563	0.07057

Totals :                    9180.06970 3257.05557

=====  
\*\*\* End of Report \*\*\*