

=====

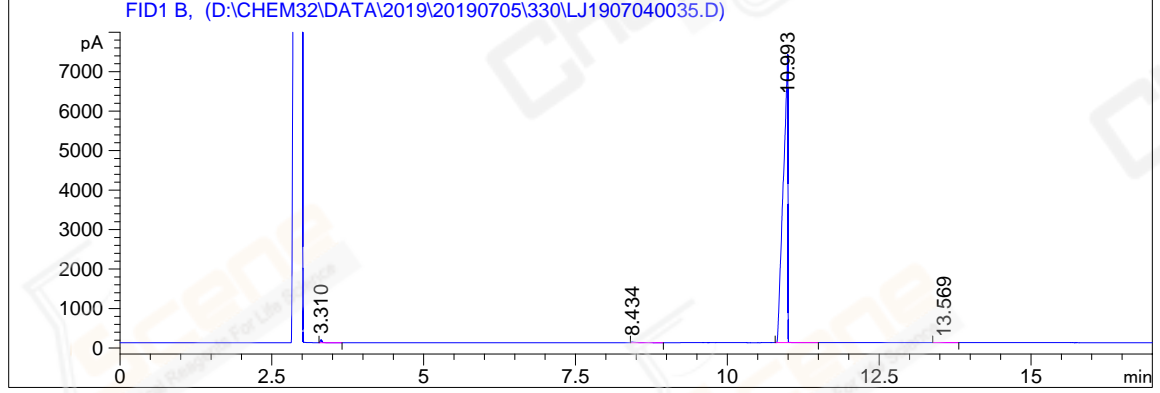
Acq. Operator	: YSS_1194	Seq. Line	: 106
Acq. Instrument	: GC-06	Location	: 98 (B)
Injection Date	: 7/7/2019 3:52:17 AM	Inj	: 1
		Inj Volume	: 1 µl

Acq. Method : D:\CHEM32\DATA\2019\20190705\330\GC-FQ.M
Last changed : 7/5/2019 4:05:10 PM by YSS_1194
Analysis Method : D:\CHEM32\DATA\2019\20190705\330\GC-FQ.M (Sequence Method)
Last changed : 7/8/2019 11:04:16 AM by YSS_1194
(modified after loading)

Method Info : test

Catalog No : CS-W011368 Batch#44517 (BY ACN) HP-5 A-CP-43

Additional Info : Peak(s) manually integrated



=====
Area Percent Report
=====

Sorted By : Signal
Multiplier : 1.0000
Dilution : 1.0000
Do not use Multiplier & Dilution Factor with ISTDs

Signal 1: FID1 B,

Peak #	RetTime [min]	Type	Width [min]	Area [pA*s]	Height [pA]	Area %
1	3.310	VB	0.0331	148.25800	69.02982	0.38042
2	8.434	BB	0.0626	106.32098	21.76173	0.27281
3	10.993	BB	0.0661	3.86931e4	7268.25244	99.28317
4	13.569	BV	0.1351	24.78790	2.19249	0.06360
Totals :				3.89725e4	7361.23648	

=====
*** End of Report ***
=====