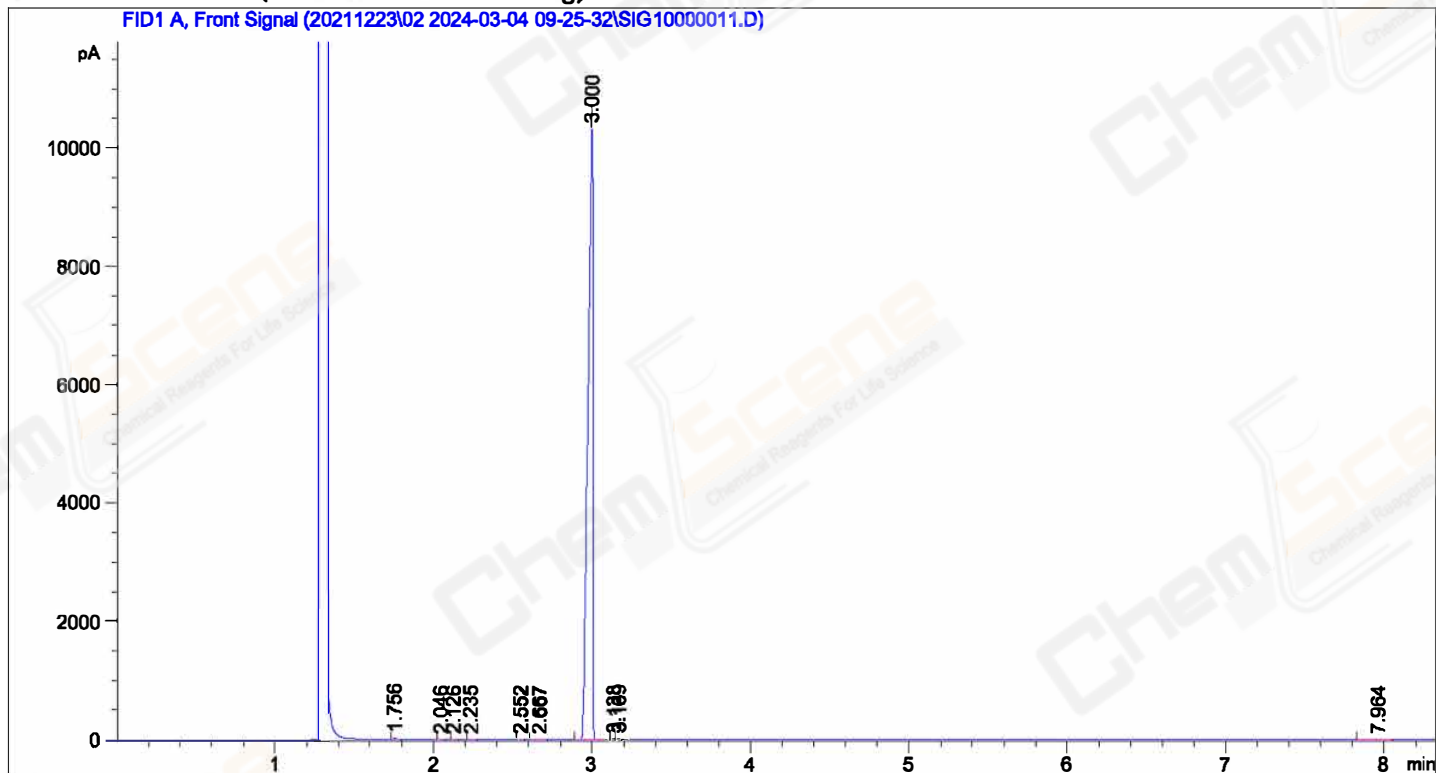


CAS NO.: 39968-33-7

=====

Acq. Operator : SYSTEM	Seq. Line : 11
Sample Operator : SYSTEM	
Acq. Instrument : 8860	Location : 42 (F)
Injection Date : 3/4/2024 11:37:34 AM	Inj : 1
	Inj Volume : 1 µl

Acq. Method : D:\ChemStation\1\Data\20211223\02 2024-03-04 09-25-32\20211224-280-.M
Last changed : 9/21/2023 1:19:32 PM by SYSTEM
Analysis Method : D:\ChemStation\1\Data\20211223\02 2024-03-04 09-25-32\20211224-280-.M (Sequence Method)
Last changed : 3/4/2024 12:37:34 PM by SYSTEM
(modified after loading)



=====
Area Percent Report
=====

Sorted By : Signal
Multiplier : 1.0000
Dilution : 1.0000
Do not use Multiplier & Dilution Factor with ISTDs

Signal 1: FID1 A, Front Signal

Peak #	RetTime [min]	Type	Width [min]	Area [pA*s]	Height [pA]	Area %
1	1.756	BB	0.0140	27.64134	29.29665	0.12373
2	2.046	BB	0.0148	1.25872	1.24090	0.00563
3	2.126	BB	0.0157	9.16108	9.09809	0.04101
4	2.235	BB	0.0161	7.63098	7.32772	0.03416
5	2.552	BB	0.0167	1.25453	1.15480	0.00562
6	2.667	BB	0.0164	4.30487	4.05155	0.01927

Peak #	RetTime [min]	Type	Width [min]	Area [pA*s]	Height [pA]	Area %
7	3.000	BV	0.0291	2.22412e4	1.03291e4	99.55362
8	3.138	VV	0.0140	14.20991	16.62878	0.06360
9	3.169	VB	0.0146	26.28709	28.94742	0.11766
10	7.964	BB	0.0444	7.97721	2.48877	0.03571

Totals : 2.23409e4 1.04293e4

=====
*** End of Report ***