

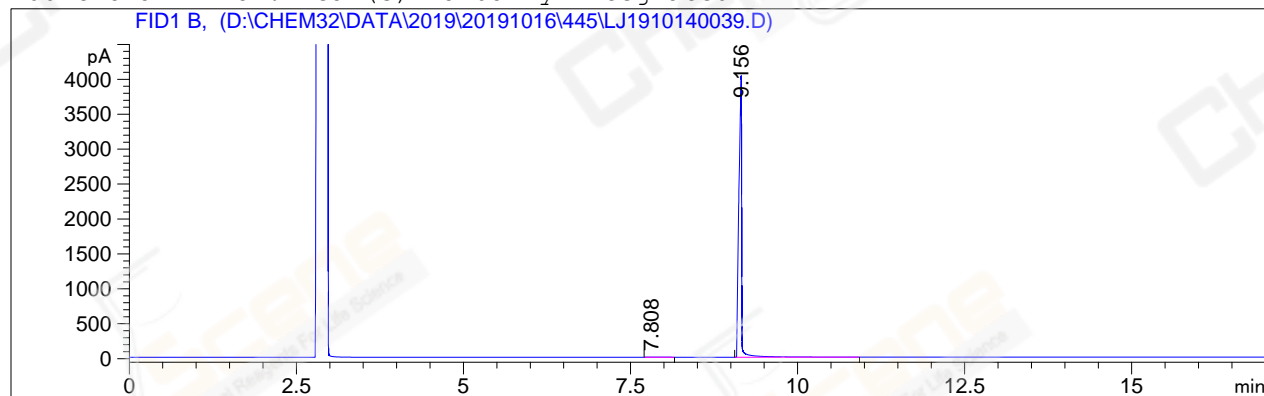
=====

Acq. Operator	: zl_1544	Seq. Line	: 16
Acq. Instrument	: GC-06	Location	: 68 (B)
Injection Date	: 10/17/2019 02:42:15	Inj	: 1
		Inj Volume	: 1 µl

Acq. Method : D:\CHEM32\DATA\2019\20191016\445\GC-FQ.M
Last changed : 10/16/2019 20:23:29 by zl_1544
Analysis Method : D:\CHEM32\DATA\2019\20191016\445\GC-FQ.M (Sequence Method)
Last changed : 10/17/2019 12:44:07 by zl_1544
Method Info : test

Catalog No : CS-W001114 Batch# 47080 (BY ACN) HP-5 A-CP-43

Additional Info : Peak(s) manually integrated



=====
Area Percent Report
=====

Sorted By : Signal
Multiplier : 1.0000
Dilution : 1.0000
Do not use Multiplier & Dilution Factor with ISTDs

Signal 1: FID1 B,

Peak #	RetTime [min]	Type	Width [min]	Area [pA*s]	Height [pA]	Area %
1	7.808	FM	0.2589	34.68732	2.23287	0.29343
2	9.156	BB	0.0386	1.17866e4	3979.84692	99.70657
Totals :				1.18212e4	3982.07979	

=====
*** End of Report ***