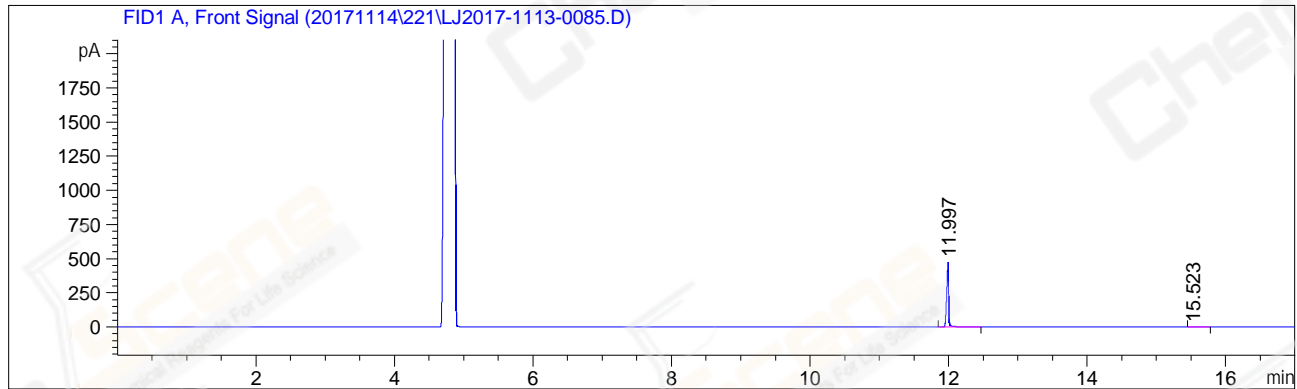


```
=====
Acq. Operator   : ZHT_761                      Seq. Line :   28
Acq. Instrument : GC-03                        Location  :   27 (F)
Injection Date  : 11/14/2017 8:49:46 PM       Inj       :    1
                                                Inj Volume: 1 µl
Acq. Method     : D:\Chem32\1\Data\20171114\221\GC-FQ.M
Last changed    : 11/14/2017 11:09:24 AM by ZHT_761
Analysis Method : D:\Chem32\1\Data\20171114\221\GC-FQ.M (Sequence Method)
Last changed    : 11/15/2017 8:49:01 AM by ZHT_761
                  (modified after loading)
CAS NO.        : 708-06-5 A-CP-21
=====
```

Additional Info : Peak(s) manually integrated



=====
Area Percent Report
=====

```
Sorted By       : Signal
Multiplier      : 1.0000
Dilution        : 1.0000
Do not use Multiplier & Dilution Factor with ISTDs
```

Signal 1: FID1 A, Front Signal

Peak #	RetTime [min]	Type	Width [min]	Area [pA*s]	Height [pA]	Area %
1	11.997	BB	0.0296	935.95190	471.13895	99.53769
2	15.523	MM R	0.0789	4.34710	9.18374e-1	0.46231

Totals : 940.29901 472.05732

=====
*** End of Report ***