

```

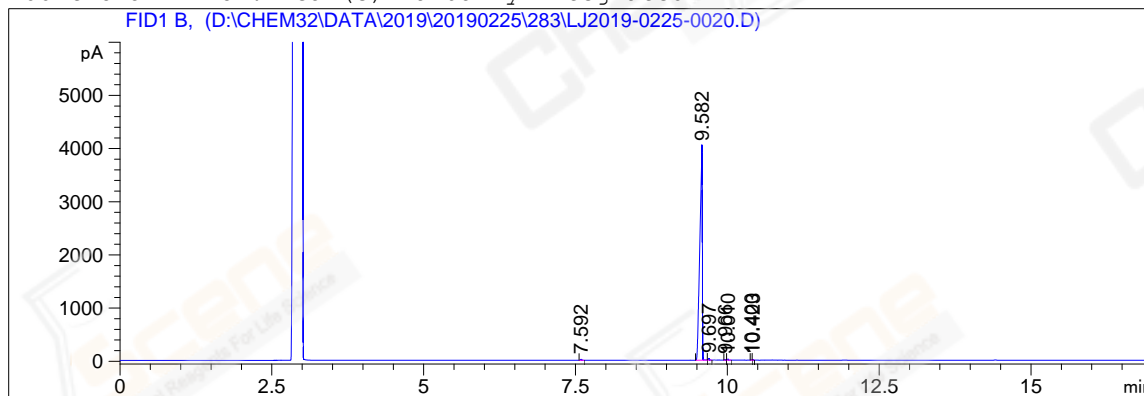
=====
Acq. Operator   : YSS_1194                               Seq. Line :   58
Acq. Instrument : GC-06                                   Location  :   90 (B)
Injection Date  : 2/26/2019 9:12:07 AM                   Inj       :    1
                                                    Inj Volume: 1 µl

Acq. Method    : D:\CHEM32\DATA\2019\20190225\283\GC-FQ.M
Last changed   : 2/25/2019 4:59:11 PM by YSS_1194
Analysis Method: D:\CHEM32\DATA\2019\20190225\283\GC-FQ.M (Sequence Method)
Last changed   : 2/26/2019 10:37:00 AM by YSS_1194
                (modified after loading)

Method Info    : test

Catalog No     : CS-W004317 Batch#51505   A-CP-43
  
```

Additional Info : Peak(s) manually integrated



=====
 Area Percent Report
 =====

```

Sorted By       :      Signal
Multiplier      :      1.0000
Dilution       :      1.0000
Do not use Multiplier & Dilution Factor with ISTDs
  
```

Signal 1: FID1 B,

Peak #	RetTime [min]	Type	Width [min]	Area [pA*s]	Height [pA]	Area %
1	7.592	BB	0.0191	21.81125	17.78974	0.18924
2	9.582	BV	0.0387	1.14169e4	4019.62451	99.05406
3	9.697	VB	0.0197	32.17361	25.17527	0.27914
4	9.966	BV	0.0185	15.09506	12.81987	0.13097
5	10.010	VB	0.0188	21.47940	17.90780	0.18636
6	10.400	BV	0.0168	7.30491	6.65848	0.06338
7	10.423	VB	0.0186	11.16322	9.41293	0.09685

Totals : 1.15259e4 4109.38861

=====
 *** End of Report ***