

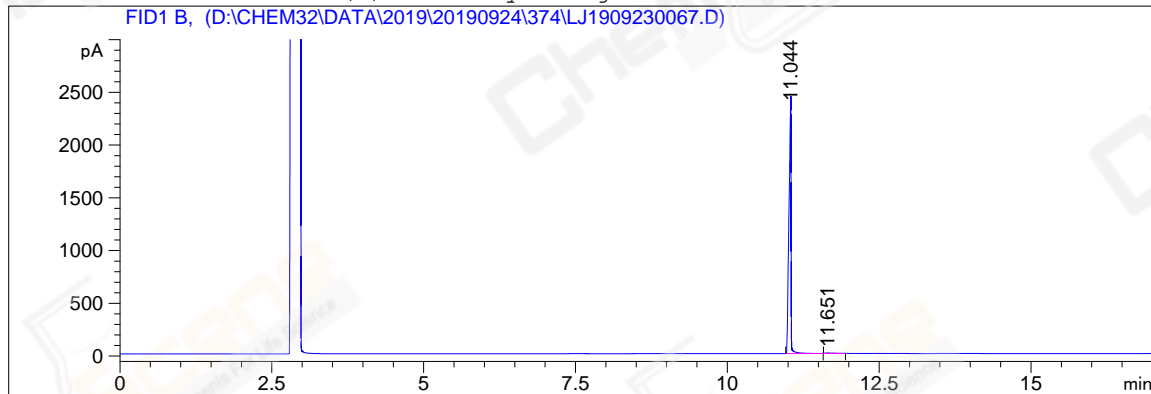
=====

Acq. Operator	: z1_1544	Seq. Line	: 26
Acq. Instrument	: GC-06	Location	: 74 (B)
Injection Date	: 9/24/2019 23:30:36	Inj	: 1
		Inj Volume	: 1 µl

Acq. Method : D:\CHEM32\DATA\2019\20190924\374\GC-FQ.M
Last changed : 9/24/2019 16:38:57 by System
Analysis Method : D:\CHEM32\DATA\2019\20190924\374\GC-FQ.M (Sequence Method)
Last changed : 9/25/2019 10:52:44 by z1_1544
Method Info : test

Catalog No : CS-D0819 Batch# Lc0923109 (BY ACN) HP-5 A-CP-43

Additional Info : Peak(s) manually integrated



=====
Area Percent Report
=====

Sorted By : Signal
Multiplier : 1.0000
Dilution : 1.0000
Do not use Multiplier & Dilution Factor with ISTDs

Signal 1: FID1 B,

Peak #	RetTime [min]	Type	Width [min]	Area [pA*s]	Height [pA]	Area %
1	11.044	BB	0.0339	5883.73145	2361.72021	99.23529
2	11.651	MM	0.2039	45.34031	3.70675	0.76471

Totals : 5929.07176 2365.42696

=====
*** End of Report ***