

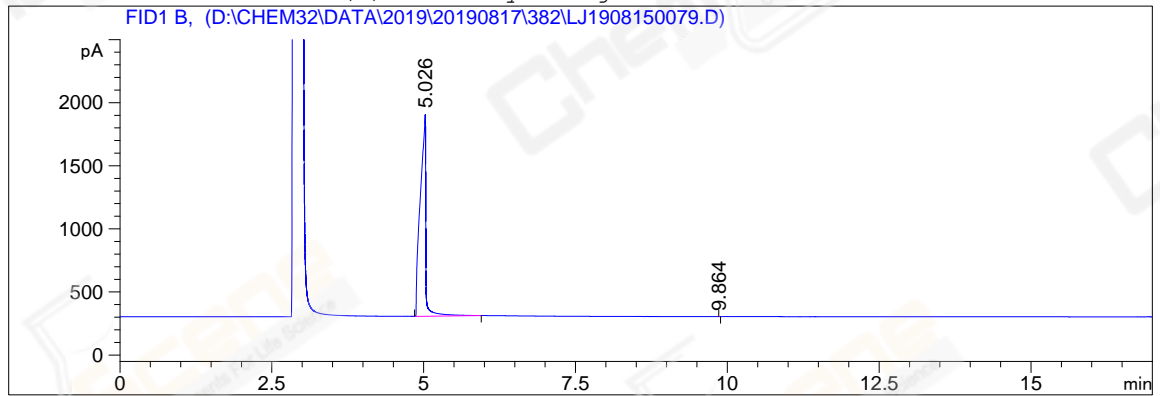
=====

Acq. Operator	: YSS_1194	Seq. Line	: 24
Acq. Instrument	: GC-06	Location	: 45 (B)
Injection Date	: 8/18/2019 3:15:14 AM	Inj	: 1
		Inj Volume	: 1 µl

Acq. Method : D:\CHEM32\DATA\2019\20190817\382\GC-FQ.M
Last changed : 8/17/2019 2:38:07 PM by YSS_1194
Analysis Method : D:\CHEM32\DATA\2019\20190817\382\GC-FQ.M (Sequence Method)
Last changed : 8/19/2019 2:03:55 PM by z1_1544
Method Info : test

Catalog No : CS-D1507 Batch#Lc0815112 (BY ACN) HP-5 A-CP-43

Additional Info : Peak(s) manually integrated



=====
Area Percent Report
=====

Sorted By : Signal
Multiplier : 1.0000
Dilution : 1.0000
Do not use Multiplier & Dilution Factor with ISTDs

Signal 1: FID1 B,

Peak #	RetTime [min]	Type	Width [min]	Area [pA*s]	Height [pA]	Area %
1	5.026	BB	0.0804	1.03970e4	1603.40771	99.99668
2	9.864	MM	0.0167	3.45709e-1	3.45517e-1	0.00332

Totals : 1.03973e4 1603.75323

=====
*** End of Report ***