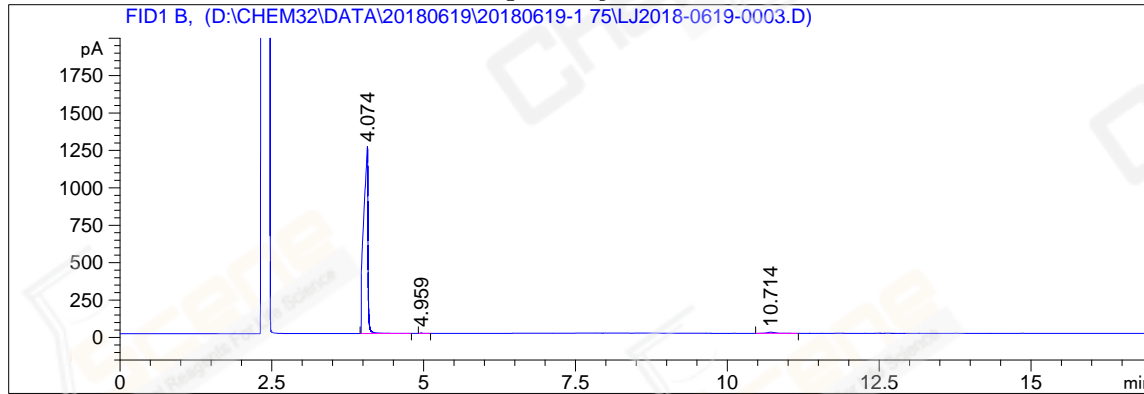


```
=====
Acq. Operator   : LCY_395                               Seq. Line : 10
Acq. Instrument : GC-06                                 Location  : 89 (B)
Injection Date  : 6/19/2018 10:20:21 PM                Inj       : 1
                                                    Inj Volume: 1 µl
Acq. Method     : D:\CHEM32\DATA\20180619\20180619-1 75\GC-FQ.M
Last changed    : 6/19/2018 5:33:23 PM by LCY_395
Analysis Method : D:\CHEM32\DATA\20180619\20180619-1 75\GC-FQ.M (Sequence Method)
Last changed    : 6/20/2018 9:07:20 AM by LCY_395
                  (modified after loading)
Method Info     : test
Catalog No      : CS-D1507 (BY ACN ) HP-5 A-CP-21
=====
```

Additional Info : Peak(s) manually integrated



=====
Area Percent Report
=====

```
Sorted By      : Signal
Multiplier     : 1.0000
Dilution       : 1.0000
Do not use Multiplier & Dilution Factor with ISTDs
```

Signal 1: FID1 B,

Peak #	RetTime [min]	Type	Width [min]	Area [pA*s]	Height [pA]	Area %
1	4.074	BB	0.0645	6169.34033	1239.84668	98.69592
2	4.959	BB	0.0219	7.28356	4.75508	0.11652
3	10.714	BB	0.1198	74.23266	7.80549	1.18756

Totals : 6250.85655 1252.40725

=====
*** End of Report ***