

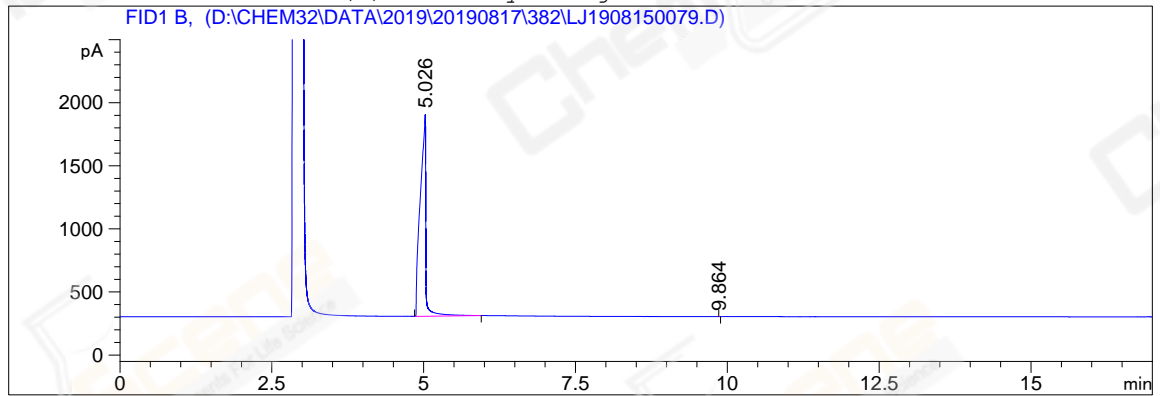
```

=====
Acq. Operator   : YSS_1194                      Seq. Line :   24
Acq. Instrument : GC-06                          Location  :   45 (B)
Injection Date  : 8/18/2019 3:15:14 AM          Inj       :    1
                                                Inj Volume: 1 µl

Acq. Method    : D:\CHEM32\DATA\2019\20190817\382\GC-FQ.M
Last changed   : 8/17/2019 2:38:07 PM by YSS_1194
Analysis Method: D:\CHEM32\DATA\2019\20190817\382\GC-FQ.M (Sequence Method)
Last changed   : 8/19/2019 2:03:55 PM by z1_1544
Method Info    : test

Catalog No     : CS-D1507 Batch#Lc0815112 (BY ACN) HP-5 A-CP-43
  
```

Additional Info : Peak(s) manually integrated



=====  
 Area Percent Report  
 =====

```

Sorted By      :      Signal
Multiplier     :      1.0000
Dilution      :      1.0000
Do not use Multiplier & Dilution Factor with ISTDs
  
```

Signal 1: FID1 B,

Peak #	RetTime [min]	Type	Width [min]	Area [pA*s]	Height [pA]	Area %
1	5.026	BB	0.0804	1.03970e4	1603.40771	99.99668
2	9.864	MM	0.0167	3.45709e-1	3.45517e-1	0.00332

Totals :                    1.03973e4  1603.75323

=====  
 \*\*\* End of Report \*\*\*