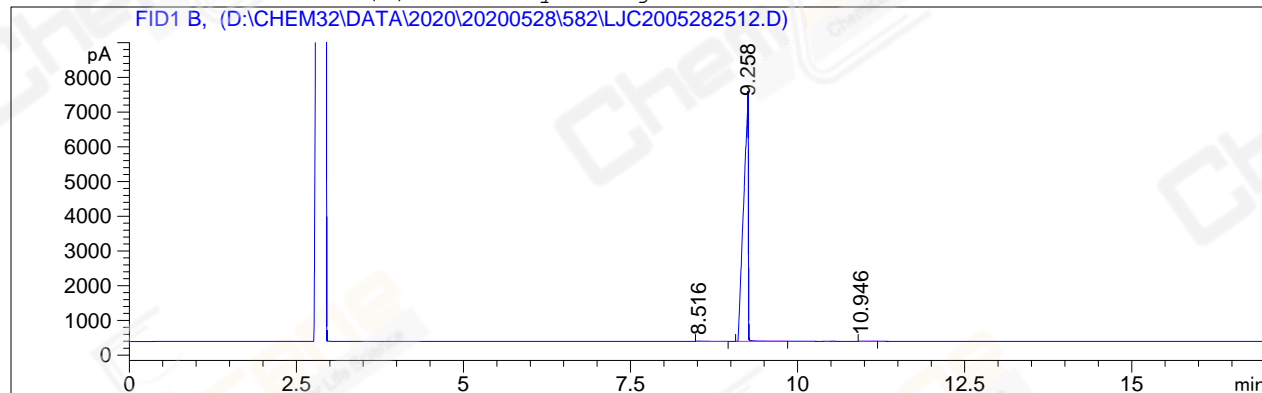


=====

Acq. Operator	: ylq_1768	Seq. Line	: 14
Acq. Instrument	: GC-06	Location	: 80 (B)
Injection Date	: 5/28/2020 22:11:53	Inj	: 1
		Inj Volume	: 1 µl
Acq. Method	: D:\CHEM32\DATA\2020\20200528\582\GC-FQ.M		
Last changed	: 5/28/2020 16:27:15 by ylq_1768		
Analysis Method	: D:\CHEM32\DATA\2020\20200528\582\GC-FQ.M (Sequence Method)		
Last changed	: 5/29/2020 09:00:49 by ylq_1768		
Catalog No	: CS-W001114 (BY ACN) HP-5 A-CP-51		

Additional Info : Peak(s) manually integrated



=====
 Area Percent Report
 =====

Sorted By : Signal
 Multiplier : 1.0000
 Dilution : 1.0000
 Do not use Multiplier & Dilution Factor with ISTDs

Signal 1: FID1 B,

Peak #	RetTime [min]	Type	Width [min]	Area [pA*s]	Height [pA]	Area %
1	8.516	BB	0.1129	77.12375	8.71044	0.22081
2	9.258	BB	0.0601	3.48205e4	7241.41992	99.69198
3	10.946	BB	0.1048	30.46269	3.82834	0.08722

Totals : 3.49280e4 7253.95870

=====
 *** End of Report ***